

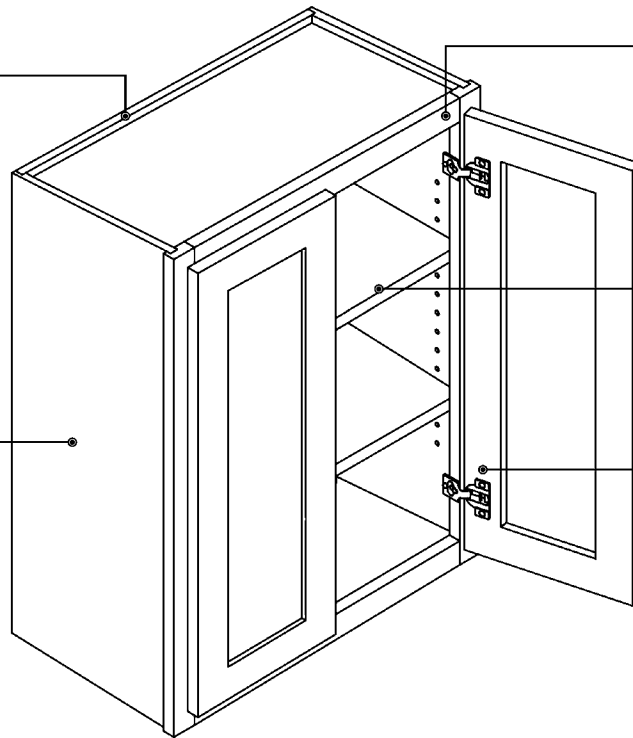


CABINET & DOOR INFORMATION

Wall Cabinet Detailed Features

Wall Back
 1/4" substrate, with 3" plywood surrounding frame, all plywood material. Rabbeted and stapled into cabinet sides, screwed into top and bottom.

Wall End Panel
 Wall End Panels, top and bottom 1/2" plywood substrate, with light maple woodgrain laminate interior. Matching wood veneer exterior.



Wall Frame
 3/4" thick, 1 1/2" wide, kiln-dried solid hardwood. Assembled with glue and nails, under clamp pressure, which ensures squareness.

Shelves
 3/4" thick, plywood; fully adjustable

Hinges
 Heavy duty steel concealed hinge, six-way adjustable.

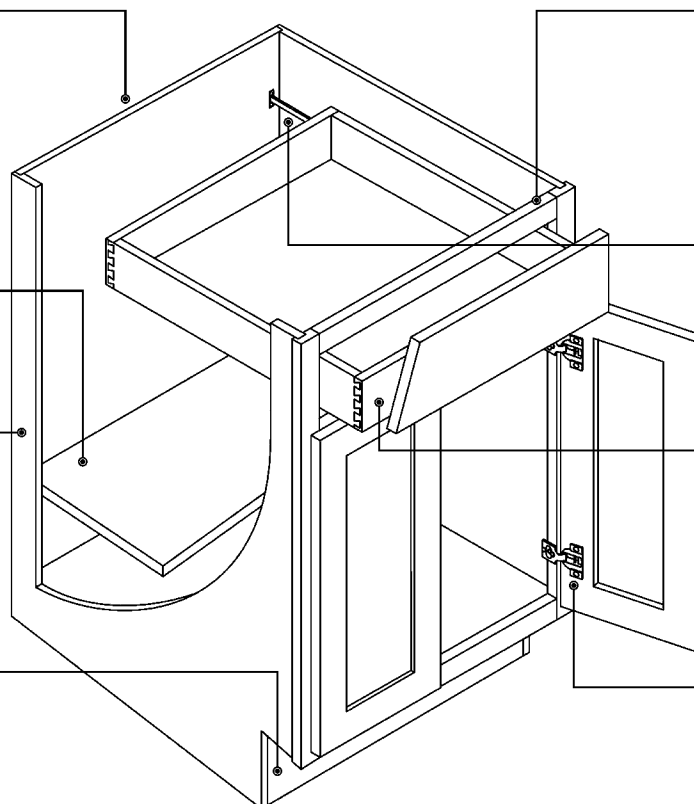
Base Cabinet Detailed Features

Base Back
 1/4" substrate, with 3" plywood surrounding frame, all plywood material. Rabbeted and stapled into cabinet sides, screwed into top and bottom.

Shelves
 3/4" thick, plywood; fully adjustable. (12" deep)

Base End Panel
 1/2" plywood substrate, with light maple woodgrain laminate interior. Matching wood veneer exterior.

Toe Kick
 4 1/2" Toe kick with 3" inset on all standard base and vanity cabinets.

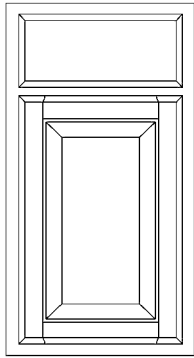


Base Frame
 3/4" thick, 1 1/2" wide, kiln-dried solid hardwood. Assembled with glue and nails, under clamp pressure, which ensures squareness.

Glides
 C4 - High quality epoxy coated steel side mounted glides. Luxor / Sierra - High quality epoxy coated steel under mounted glides.

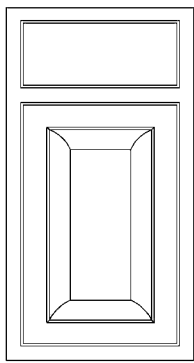
Drawers
 C4- 5/8" Plywood sides with 3/8" thick bottom fastened with screws Luxor / Sierra - 3/4" solid wood **Dovetail** sides 3/8" thick bottom

Hinges
 Heavy duty steel concealed hinge, six-way adjustable.



Color	Species	Price Range
C4 Honey	Oak	G

A standard reveal 5 piece solid wood with a raised panel MDF veneer center panel Mortise and Tenon construction, slab drawer front, Oak wood in a Honey finish.

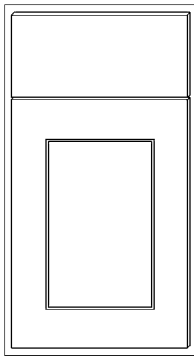


Sierra

Color	Species	Price Range
S8 Toffee	Birch	H
S9 Nutmeg	Birch	H
S11 Espresso	Birch	H

• Can be upgraded to soft-close

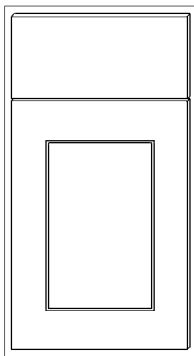
A standard reveal 5 piece solid wood with a raised panel MDF veneer center panel Mortise and Tenon construction, slab drawer front.



Color	Species	Price Range
L10 White	MDF/Paint	J

• Can be upgraded to soft-close

A 1/2" reveal, 2 1/2" wide shaker style MDF door with a flat center panel, Mortise and Tenon construction, slab drawer front.



Luxor Birch

Color	Species	Price Range
L06 Cinnamon	Birch	J
L11 Espresso	Birch	J

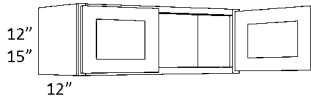
• Can be upgraded to soft-close

A 1/2" reveal 2 1/2" wide shaker style solid wood Birch with a flat center panel, Mortise and Tenon construction, slab drawer front.



SPECIFICATIONS & PRICES

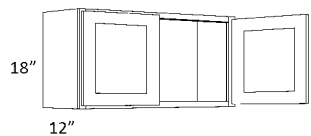
12" - 15" High Wall Cabinets



		Cubic Feet	Weight	G	H	J
3012	3	24	231	239	252	
3312	3	26	240	250	262	
3612	3	28	260	270	284	
2415	3	25	228	236	248	
3015	4	27	235	244	257	
3315	4	30	245	255	267	
3615	4	32	260	270	284	

• Butt Doors • No Shelf

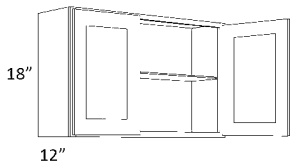
18" High Wall Cabinets



		Cubic Feet	Weight	G	H	J
2118 (1 Door)	3	27	216	220	232	
2418	3	30	228	236	248	
3018	4	35	238	248	260	
3318	5	38	258	270	284	
3618	5	41	296	308	323	

• Butt Doors • No Shelf

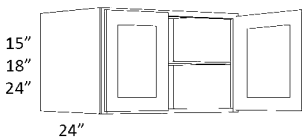
24" High Wall Cabinets



		Cubic Feet	Weight	G	H	J
1824 (1 Door)	3	26	244	258	270	
2424	4	29	324	337	354	
2724	5	34	329	341	358	
3024	5	42	329	341	358	
3324	6	44	349	363	381	
3624	6	48	375	390	410	
4224	7	51	447	465	488	
4824	9	57	500	522	548	

• Butt Doors

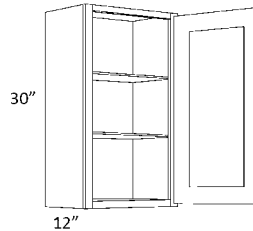
24" Deep Wall Cabinets



		Cubic Feet	Weight	G	H	J
3015X24	7	43	316	329	345	
3018X24	8	46	N/A	N/A	396	
3024X24	10	49	440	457	479	
3318X24	9	48	N/A	N/A	449	
3615X24	8	47	352	365	384	
3618X24	10	50	N/A	N/A	437	
3624X24	12	53	508	527	553	

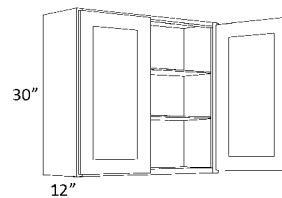
• Butt Doors

30" High 1 Door Wall Cabinet



	Cubic Feet	Weight	G	H	J
930	3	24	185	193	203
1230	4	27	207	214	225
1530	5	31	224	232	243
1830	5	34	252	261	275
2130	6	40	301	312	328

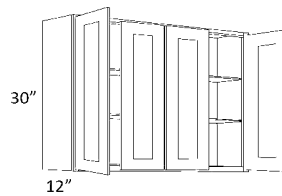
30" High 2 Door Wall Cabinet



	Cubic Feet	Weight	G	H	J
2430	7	42	321	334	350
2730	7	50	354	367	386
3030	8	53	363	378	396
3330	9	57	394	410	431
3630	9	60	419	436	458
3930	10	64	453	471	495
4230	11	67	482	500	525

• Butt Doors

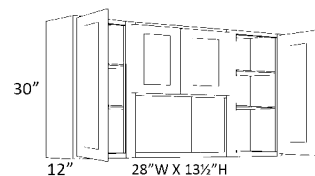
30" High 4 Door Wall Cabinet



	Cubic Feet	Weight	G	H	J
4830	12	77	545	567	595
5430	14	80	609	633	665

• Butt Doors

30" High Open Wall Cabinet



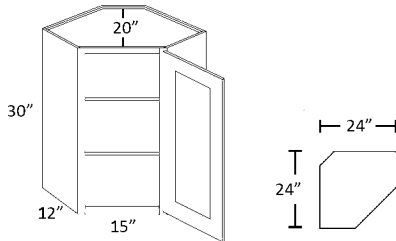
	Cubic Feet	Weight	G	H	J
6030-O	16	110	623	648	680

	Door	Middle	Door
6030	15"	30"	15"

• Butt Doors • Opening Natural interior finish

30" High Diagonal Corner Wall Cabinets

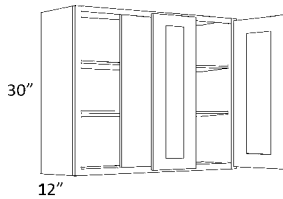
CW2430	Cubic Feet	Weight	G	H	J
--------	------------	--------	---	---	---



• Requires 24" X 24" wall space

30" High Blind Wall Cabinets

BLW27/3030	Cubic Feet	Weight	G	H	J
BLW36/3930	9	60	547	474	498
BLW39/4230	10	64	598	622	653
BLW42/4530	11	67	656	682	717

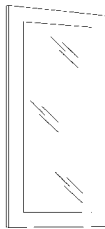


	Act.	Max.	Door
BLW27/30	27"	30"	1230
BLW36/39	36"	39"	2130
BLW39/42	39"	42"	2430
BLW42/45	42"	45"	2730

• Butt Doors • Reversible L or R
• Can be installed at actual size

30" High Glass Door

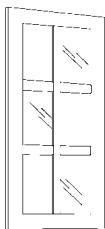
GD1530	Cubic Feet	Weight	G	H	J
GD1830	1	3	N/A	N/A	111
GD3030	1	3	N/A	N/A	126
GD3630	1	6	N/A	N/A	214
GD3630	1	6	N/A	N/A	225
GDCW2430	1	3	N/A	N/A	111



• Glass not included

30" High Mullion Door

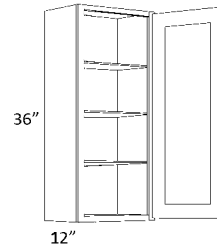
MD1530	Cubic Feet	Weight	G	H	J
MD1830	1	3	102	106	N/A
MD1830	1	3	114	120	N/A
MD3030	1	6	197	204	N/A
MD3630	1	6	206	214	N/A
MDCW2430	1	3	102	106	N/A



• Glass not included

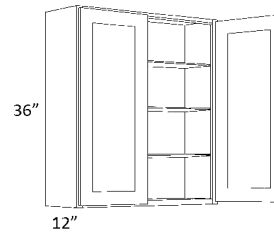
36" High 1 Door Wall Cabinet

936	Cubic Feet	Weight	G	H	J
1236	5	31	N/A	N/A	234
1536	5	35	N/A	N/A	259
1836	6	40	N/A	N/A	280
2136	7	44	N/A	N/A	315
	8	48	N/A	N/A	376



36" High 2 Door Wall Cabinet

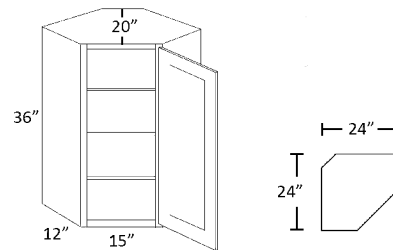
2436	Cubic Feet	Weight	G	H	J
2736	9	52	N/A	N/A	404
3036	10	58	N/A	N/A	443
3336	11	61	N/A	N/A	456
3636	12	65	N/A	N/A	495
4236	13	69	N/A	N/A	526
	18	98	N/A	N/A	603



• Butt Doors

36" High Diagonal Corner Wall Cabinet

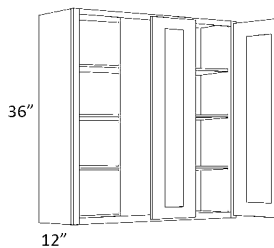
CW2436	Cubic Feet	Weight	G	H	J
	16	60	N/A	N/A	588



• Requires 24" X 24" wall space

36" High Blind Wall Cabinet

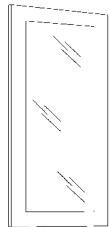
BLW27/3036	Cubic Feet	Weight	G	H	J
BLW36/3936	10	58	N/A	N/A	573
BLW39/4236	13	69	N/A	N/A	687
BLW39/4236	14	74	N/A	N/A	751



	Act.	Max.	Door
BLW27/30	27"	30"	1236
BLW36/39	36"	39"	2136
BLW39/42	39"	42"	2436

• Butt Doors • Reversible L or R
• Can be installed at actual size

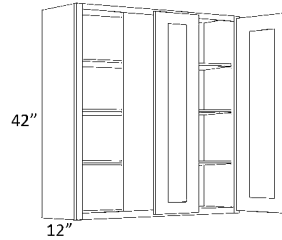
36" High Glass Door



		Cubic Feet	Weight	G	H	J
GD1536	1	3	N/A	N/A	115	
GD1836	1	3	N/A	N/A	139	
GD3036	1	6	N/A	N/A	245	
GD3636	1	6	N/A	N/A	279	
GDCW2436	1	3	N/A	N/A	115	

• Glass not included

42" High Blind Wall Cabinet

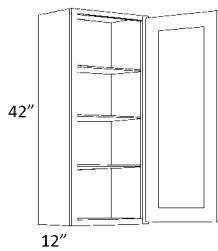


	Cubic Feet	Weight	G	H	J
BLW27/3042	10	58	591	614	645
BLW36/3942	13	69	710	738	776
BLW39/4242	14	74	777	807	848

	Act.	Max.	Door
BLW27/30	27"	30"	1242
BLW36/39	36"	39"	2142
BLW39/42	39"	42"	2442

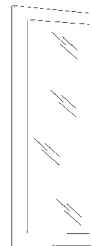
• Butt Doors • Reversible L or R
• Can be installed at actual size

42" High 1 Door Wall Cabinet



942	5	31	250	259	271	
1242	5	35	272	283	297	
1542	6	40	300	311	327	
1842	7	44	333	346	364	
2142	8	48	398	414	435	

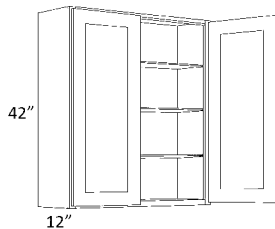
42" High Glass Door



GD1542	1	3	N/A	N/A	128
GD1842	1	3	N/A	N/A	145
GD3042	1	6	N/A	N/A	246
GD3642	1	6	N/A	N/A	258
GDCW2442	1	3	N/A	N/A	128

• Glass not included

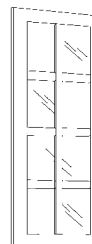
42" High 2 Door Wall Cabinet



2442	9	52	426	443	465
2742	10	58	470	489	514
3042	11	61	487	505	530
3342	12	65	524	545	572
3642	13	69	555	577	606
4242	15	76	645	670	703

• Butt Doors

42" High Mullion Door

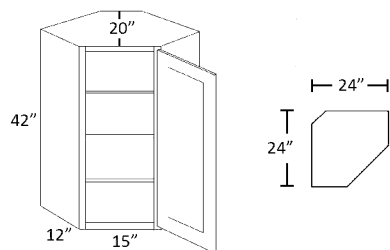


MD1542	1	3	106	110	N/A
MD1842	1	3	128	133	N/A
MD3042	1	6	225	234	N/A
MD3642	1	6	255	265	N/A
MDCW2442	1	3	106	110	N/A

• Glass not included

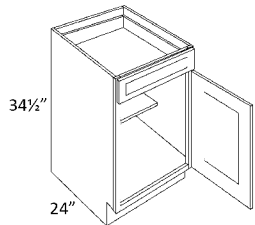
42" High Diagonal Corner Wall Cabinet

CW2442	16	60	609	633	665



• Requires 24" X 24" wall space

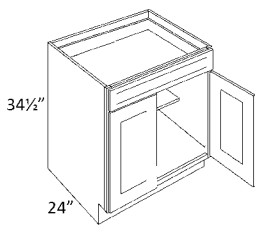
1 Door Base Cabinets



	Cubic Feet	Weight	G	H	J
B9	6	43	272	283	297
B12	7	47	312	324	341
B15	9	50	327	339	356
B18	10	55	344	358	375
B21	12	59	391	407	427

- 12" Deep shelf

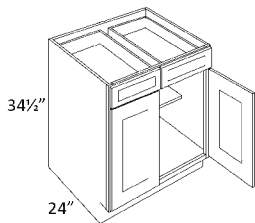
1 Drawer 2 Door Base Cabinets



B24	14	64	417	434	456
B27	15	74	460	477	501

- Butt Doors • 12" Deep shelf

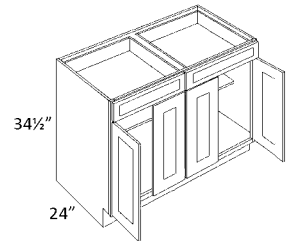
2 Drawer 2 Door Base Cabinets



B30	16	77	502	522	548
B33	18	81	536	556	584
B36	20	86	563	584	614
B39	21	90	599	623	654
B42	23	94	631	656	690

- Butt Doors • 12" Deep shelf

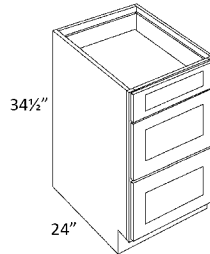
2 Drawer 4 Door Base Cabinets



B48	26	109	705	733	770
-----	----	-----	-----	-----	-----

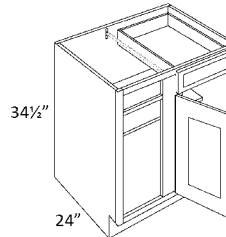
- Butt Doors • 12" Deep shelf

3 Drawer Base Cabinets



	Cubic Feet	Weight	G	H	J
DB12	7	59	459	476	500
DB15	9	65	482	500	525
DB18	10	71	496	516	542
DB21	12	77	515	536	563
DB24	13	82	534	554	582
DB30	15	89	N/A	N/A	643

Blind Base Cabinets

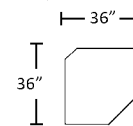
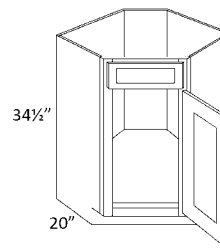


BLB36/39	15	86	558	580	609
BLB39/42	18	90	576	599	629
BLB42/45	21	94	616	640	672

	Act.	Max.	Door
BLB36/39	30"	39"	B12
BLB39/42	36"	42"	B15
BLB42/45	42"	45"	B18

- Reversible L or R
- Must be pulled to the minimum position

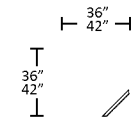
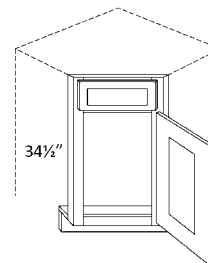
Diagonal Corner Sink Base Cabinet



CSB36	24	75	847	880	924
-------	----	----	-----	-----	-----

- Requires 36" X 36" wall space

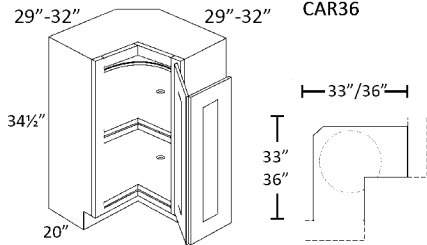
Diagonal Corner Sink Front



CSF36	4	11	224	232	243
CSF42	1	11	N/A	250	262
CSFFL36 (Floor)	-	-	104	104	104
CSFFL42 (Floor)	-	-	N/A	114	114

- Requires 36" X 36" / 42" X 42" wall space
- Requires floor

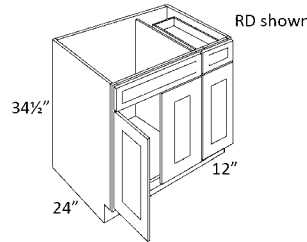
Lazy Susan Corner Base Cabinet



• Requires 33" X 33" / 36" X 36" wall space
Pie cut for 33" is 9" and for 36" is 12"

Cubic Feet	Weight	G	H	J
22	85	N/A	952	999
22	85	914	952	999

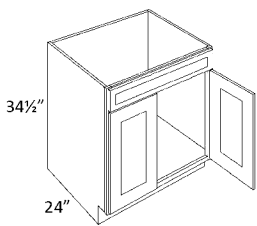
Combination Sink Base Cabinets



• Butt Doors • Drawer is 12" wide

Cubic Feet	Weight	G	H	J
23	73	566	N/A	N/A
23	73	566	N/A	N/A

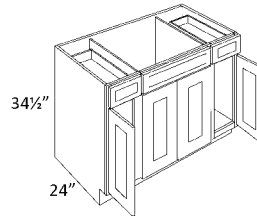
1 D-Front 2 Door Sink Base Cabinets



• Butt Doors

SB24	13	52	413	428	450
SB27	15	56	444	463	486

Combination Sink Base Cabinets

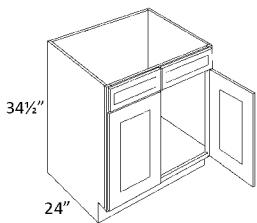


• Butt Doors

SB54	30	110	671	698	733
SB60	34	125	731	760	799

	Door	Sink	Door
SB54	12"	30"	12"
SB60	15"	30"	15"

2 D-Front 2 Door Sink Base Cabinets



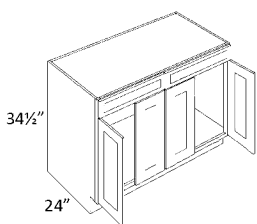
• Butt Doors

SB30	17	60	470	489	514
SB33	18	63	498	518	544
SB36	20	66	510	529	555
SB39	21	69	523	544	571
SB42	23	73	534	554	582

[Redacted Section]

[Redacted Section]

SB48

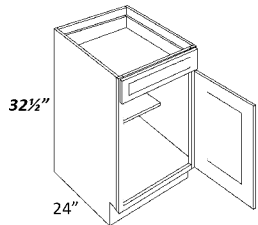


• Butt Doors

SB48	26	78	601	625	656
------	----	----	-----	-----	-----

ADA Cabinets

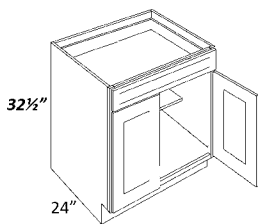
1 Door Base Cabinets



	Cubic Feet	Weight	G	H	J
B9-HA	6	43	N/A	N/A	297
B12-HA	7	47	N/A	N/A	341
B15-HA	9	50	N/A	N/A	356
B18-HA	10	55	N/A	N/A	375
B21-HA	12	59	N/A	N/A	427

- 12" Deep shelf

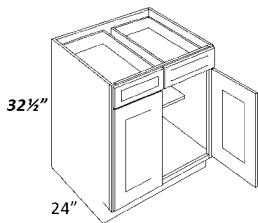
1 Drawer 2 Door Base Cabinets



	Cubic Feet	Weight	G	H	J
B24-HA	14	64	N/A	N/A	456
B27-HA	15	74	N/A	N/A	501

- Butt Doors
- 12" Deep shelf

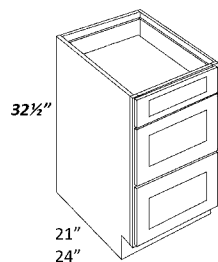
2 Drawer 2 Door Base Cabinets



	Cubic Feet	Weight	G	H	J
B30-HA	16	77	N/A	N/A	548
B33-HA	18	81	N/A	N/A	584
B36-HA	20	86	N/A	N/A	614
B39-HA	21	90	N/A	N/A	654

- Butt Doors
- 12" Deep shelf

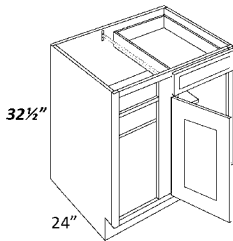
3 Drawer Base Cabinets



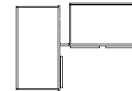
	Cubic Feet	Weight	G	H	J
DB12-HA	7	59	N/A	N/A	500
DB15-HA	9	65	N/A	N/A	525
DB18-HA	10	71	N/A	N/A	542
VDB12-HA*	5	45	N/A	N/A	487

- * 21" Deep vanity

Blind Base Cabinets



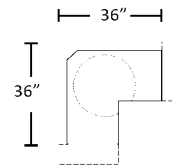
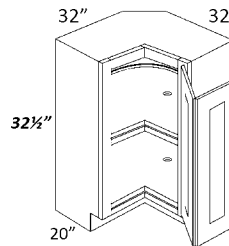
	Cubic Feet	Weight	G	H	J
BLB36/39-HA	15	86	N/A	N/A	609



	Min.	Max.	Door
BLB36/39	27"	39"	B12

- Reversible L or R
- Must be pulled to the minimum position

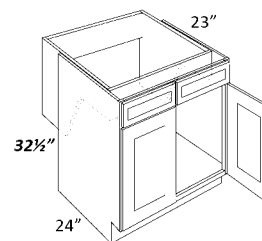
Lazy Susan Corner Base Cabinet



	Cubic Feet	Weight	G	H	J
CAR36-HA	22	85	N/A	N/A	999

- Requires 36" X 36" wall space

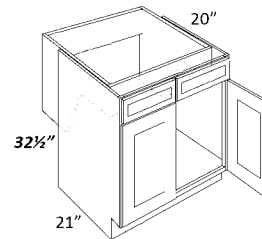
2 Door Removable Sink Base Cabinets



	Cubic Feet	Weight	G	H	J
SB33-HR	18	63	N/A	N/A	544
SB36-HR	20	66	N/A	N/A	555

- Butt Doors

Vanity Drawer Base Cabinets Removable Vanity Sink Base Cabinets

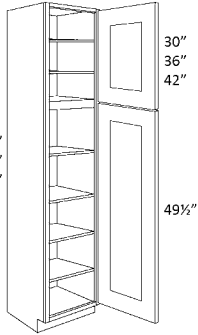


	Cubic Feet	Weight	G	H	J
V3321-HR	18	63	N/A	N/A	662
V3621-HR	20	66	N/A	N/A	699

- Butt Doors



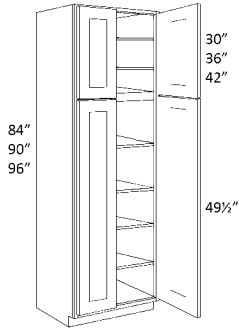
Single Door Utility Cabinets



	Cubic Feet	Weight	G	H	J
UC1824X84	24	121	1045	1087	1141
UC1824X90	26	130	N/A	N/A	1311
UC1824X96*	28	139	1359	1413	1484

* Has 3 upper shelves

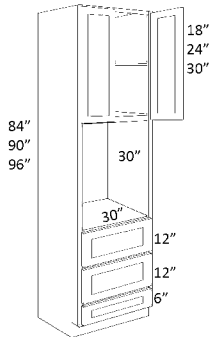
Double Door Utility Cabinets



	Cubic Feet	Weight	G	H	J
UC2424X84	31	138	1204	1252	1315
UC2424X90	33	143	N/A	N/A	1512
UC2424X96*	36	150	1520	1581	1660

• Butt Doors
* Has 3 upper shelves

Overhead Utility Cabinets

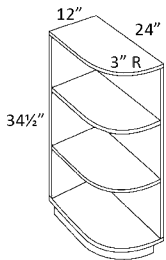


	Cubic Feet	Weight	G	H	J
OV3384	31	138	N/A	N/A	1277
OV3390	33	143	N/A	N/A	1468
OV3396*	36	150	N/A	N/A	1662

• Butt Doors
* Has 2 upper shelves

Cubic Feet Weight G H J

Knick Knack Base Shelf

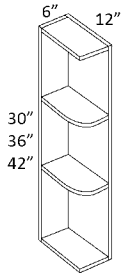


Shelves not adjustable

BS24	7	35	218	227	238
------	---	----	-----	-----	-----

- Reversible
- Assembled only
- Loose toe kick

Knick Knack Wall Shelves

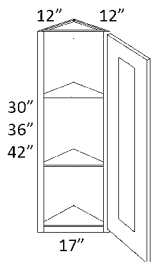


Shelves not adjustable

WS30	2	10	112	116	123
WS36	3	11	N/A	N/A	139
WS42	4	12	151	156	164

- Reversible
- Assembled only
- 42" 3 shelves

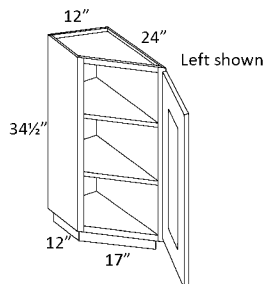
Single Door Wall End Cabinets



WEC1230	4	27	218	227	238
WEC1236	5	30	N/A	N/A	274
WEC1242	6	33	275	285	300

- 42" Has 3 shelves

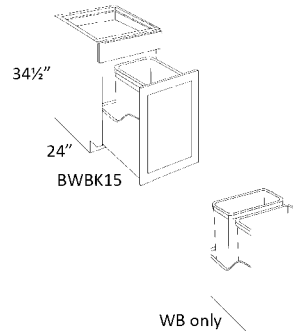
Angle Base End Cabinet



BTC2412	7	47	N/A	324	341
---------	---	----	-----	-----	-----

- Reversible
- Loose toe kick
- Hinged on 24"

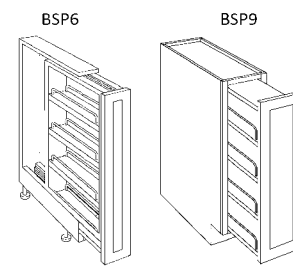
Waste Basket Cabinets



BWBK15 (1-B)	9	65	N/A	657	657
BWBK18 (2-B)	10	70	N/A	729	729
WB15 (1-B)	-	-	N/A	266	266
WB18 (2-B)	-	-	N/A	319	319

- For RTA use B15/B18 cabinet (pg 15) and WB
- Includes 35qt. waste basket (BK18 gets 2)

Spice Cabinets

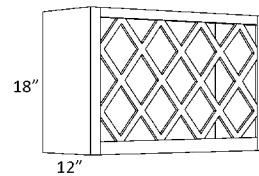


Assembled only

BSP6*	5	38	N/A	406	406
BSP9	7	40	N/A	616	630

- * Must be installed between 2 base cabinets

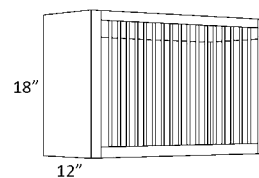
Wine Rack Cabinet



WR3018	4	35	313	326	342
--------	---	----	-----	-----	-----

- Finished interior

Plate Rack Cabinet



PR3018	4	35	313	326	342
--------	---	----	-----	-----	-----

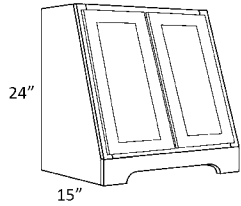
- Finished interior



Double Door Wood Hood

WH30

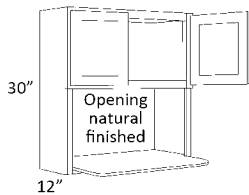
Cubic Feet	Weight	G	H	J
6	15	260	N/A	N/A



Microwave Cabinet

MW3030

Cubic Feet	Weight	G	H	J
8	53	449	467	490

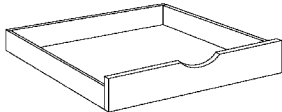


- Opening 28" X 18"
- Shelf 15" deep

Pull Out Shelves

Model	Cubic Feet	Weight	G	H	J
POS-12	2	4	145	145	145
POS-15	2	5	152	152	152
POS-18	2	5	168	168	168
POS-21	2	5	177	177	177
POS-24	3	6	199	199	199
POS-27	3	7	207	207	207
POS-30	3	7	217	217	217
POS-33	4	8	226	226	226
POS-36	4	8	242	242	242

Natural finished

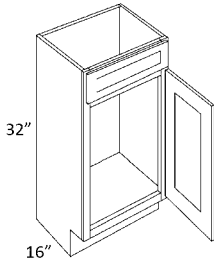


- Installed optional (see pg.89)
- Ball bearing glides included



1 Door Vanity Sink Base Cabinet

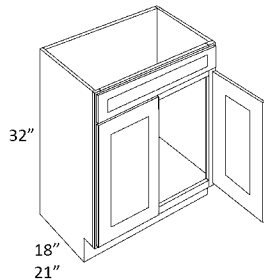
V1816	8	30	203	211	222
-------	---	----	-----	-----	-----



• Use tops from pg. 94

2 Door Vanity Sink Base Cabinets

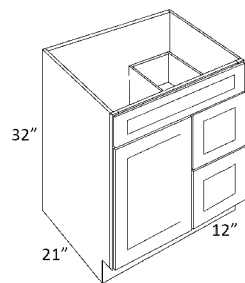
V2418	10	42	262	272	286
V3018	12	46	333	346	364
V2421	12	43	283	294	309
V3021	14	47	354	367	386
V3621	17	55	427	444	466



• Use tops from pg. 94

1 Door 2 Drawer Vanity Sink Base Cabinets

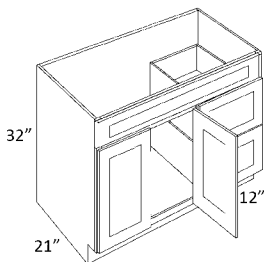
V2421D	12	43	408	424	445
V3021D	14	47	560	581	610



• Drawers on right only • Use tops from pg. 94

2 Door 2 Drawer Vanity Sink Base Cabinets

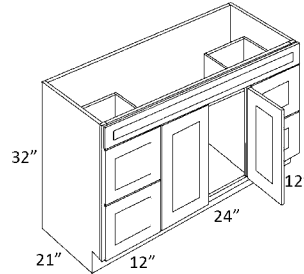
V3621D	17	54	634	659	693
V4221D	19	59	644	669	702



• Drawers on right only • Use tops from pg. 94

2 Door 4 Drawer Vanity Sink Base Cabinet

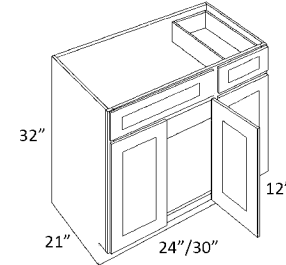
V4821DD	22	67	733	762	801
---------	----	----	-----	-----	-----



• Use tops from pg. 94

Vanity Drawer Base Cabinets

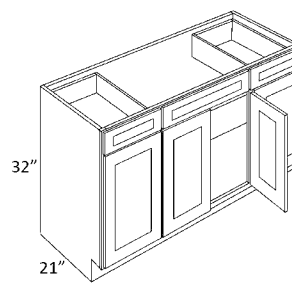
VB3621	17	55	N/A	659	694
VB4221	19	59	N/A	669	702



• Right side drawer only • Use tops from pg. 94

Vanity Drawer Base Cabinets

VB4821	22	67	N/A	762	801
VB5421	26	72	N/A	765	804
VB6021	30	77	N/A	840	882

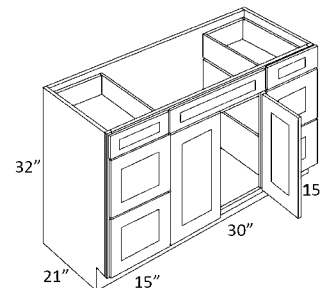


	Door	Sink	Door
48	30"	39"	B12
54	36"	42"	B15
60	42"	45"	B18

• Use tops from pg. 94

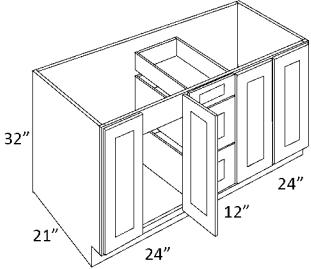
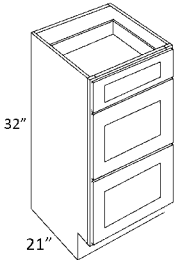
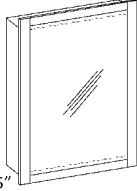
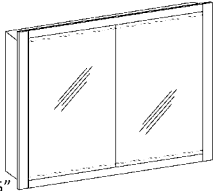
Vanity Drawer Base Cabinets

V6021DD	30	82	N/A	890	935
---------	----	----	-----	-----	-----



• Use tops from pg. 94



		Cubic Feet	Weight	G	H	J		Cubic Feet	Weight	G	H	J
Vanity Drawer Base Cabinets	VDB6021	30	82	N/A	890	935						
												
	• Use tops from pg. 94											
Vanity Drawer Base Cabinets	VDB1221	5	45	N/A	464	487						
	VDB1521	7	51	469	488	512						
	VDB1821	9	59	480	499	524						
Single Door Medicine Cabinet	MC1830	4	30	203	211	222						
												
Double Door Medicine Cabinet	MC2430	5	35	364	379	397						
	MC3030	8	40	407	422	443						
	MC3630	9	42	458	475	499						

Wall Fillers



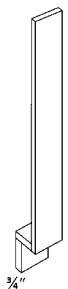
Part	Cubic Feet	Weight	G	H	J
WF3	-	1	33	38	38
WF6	-	1	52	65	65
WF342	-	2	44	50	50
WF642	-	2	73	90	90

Tall Fillers



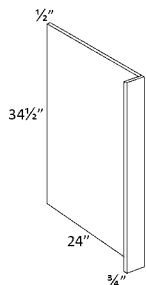
Part	Cubic Feet	Weight	G	H	J
TF396	-	3	85	120	120
TF696	-	5	166	200	200

Base Fillers



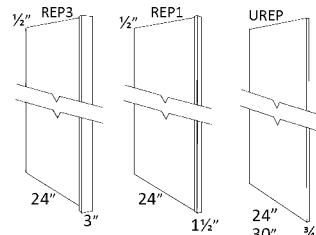
Part	Cubic Feet	Weight	G	H	J
BF3	-	1	41	50	50
BF6	-	2	68	85	85

Dishwasher Return



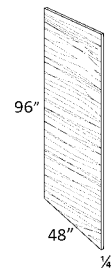
Part	Cubic Feet	Weight	G	H	J
DWR3	1	4	112	140	140
DWR6	2	5	N/A	167	167

Refrigerator End Panels



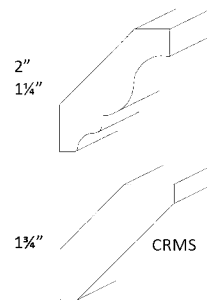
Part	Cubic Feet	Weight	G	H	J
REP384	-	5	310	390	390
REP390	-	5	N/A	N/A	410
REP396	-	5	350	430	430
REP184	-	5	310	390	390
REP190	-	5	N/A	N/A	410
REP196	-	5	350	430	430
UREP24	-	5	N/A	384	384
UREP30	-	6	N/A	550	550

Plywood Panel



Part	Cubic Feet	Weight	G	H	J
PLY4X8	-	4	229	350	350

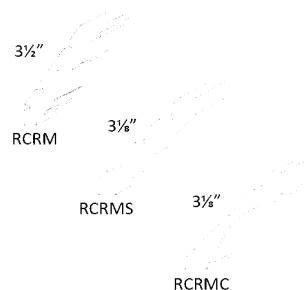
Crown Molding



Part	Cubic Feet	Weight	G	H	J
CRM (2")	-	2	81	105	105
CRM1 (1 1/4")	-	2	79	105	105
CRMS (1 1/4")	-	2	N/A	105	105

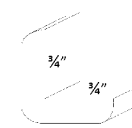

• 8 Feet long • Projection is 1-1/2"

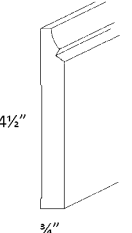
Royal Crown Molding

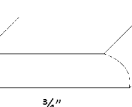


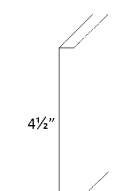
Part	Cubic Feet	Weight	G	H	J
RCRM	-	2	N/A	300	300
RCRMS	-	2	N/A	300	300
RCRMC	-	2	N/A	300	300


• 8 Feet long • Projection is 2-1/2"

		Cubic Feet	Weight	G	H	J
Corner Moldings	OCM	-	1	68	80	80
	ICM	-	1	54	80	80
	OCM					
	ICM					
						• 8 Feet long

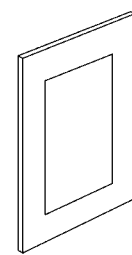
Base Molding	BSMS	-	1	N/A	213	213
						
						• 8 Feet long

Scribe Molding	SCM	-	1	51	63	63
						
						• 8 Feet long

Toe Kick	TKS	-	1	57	65	65
						
						• 8 Feet long

		Cubic Feet	Weight	G	H	J
Scalloped Valances	VAL-30	-	3	36	50	50
	VAL-48	-	4	47	85	85
	VAL-60	-	5	56	100	100
						

Crown Valances	VAL1-30	-	3	52	50	50
	VAL1-48	-	4	84	85	85
	VAL1-60	-	5	96	100	100
						

Sample Door	SD11X14	-	3	52	57	62
						

Touch Up Kit	TUP	-	-	67	67	67
