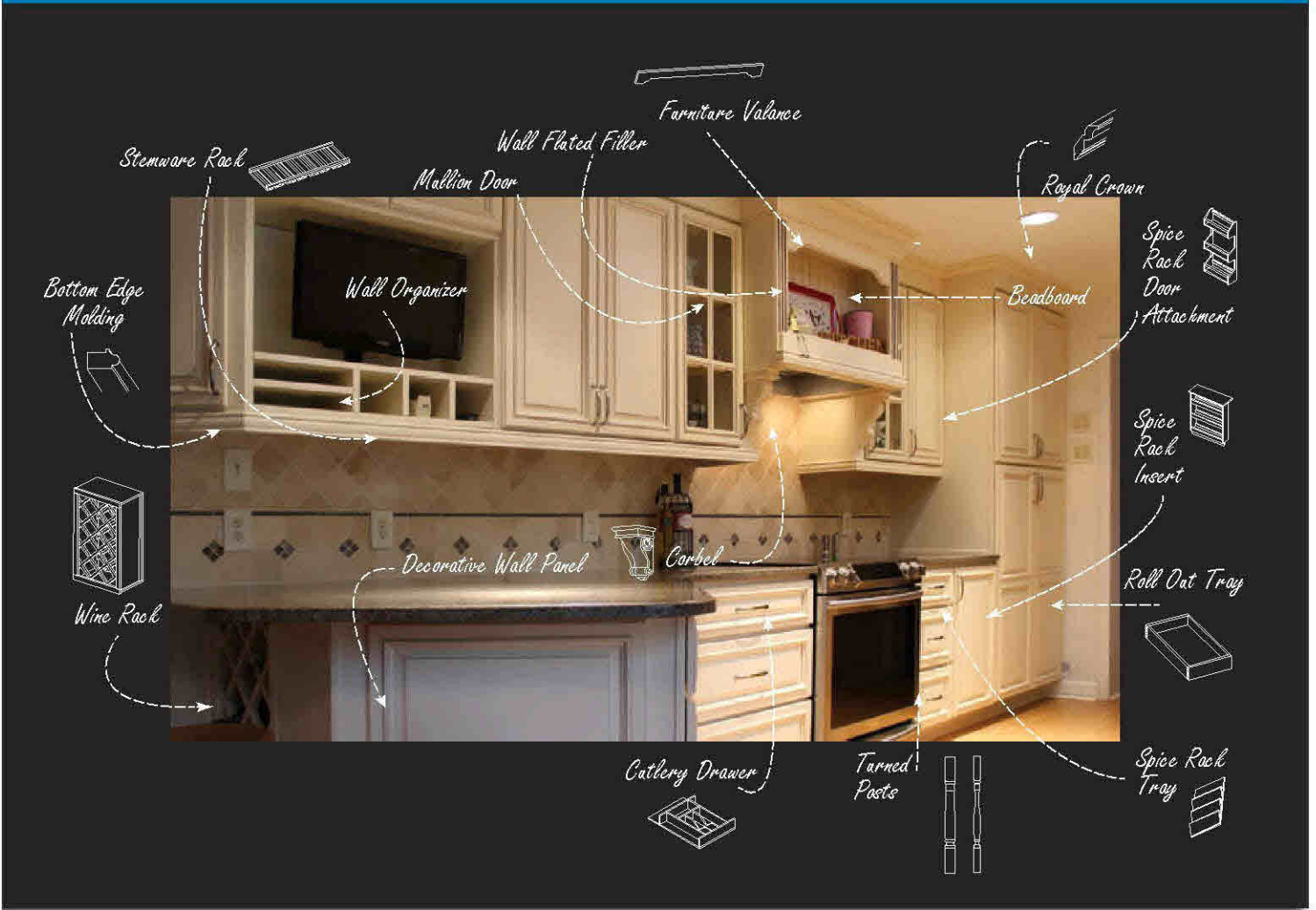


IF YOU CAN DREAM IT, WE CAN DESIGN IT



With over 1,000 different accessory options, we offer all the tools to complete your perfect kitchen. You can count on us to consistently deliver thoughtfully engineered, quality cabinets every time. Add to that our five year limited warranty, high quality materials, and exceptional service.

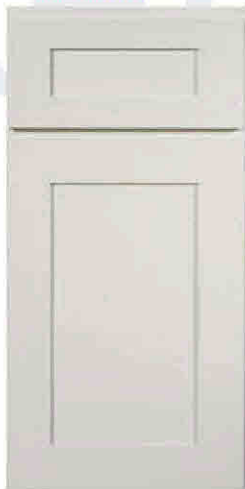


YOU PROVIDE THE SPACE,
AND WE'LL PROVIDE ALL THE
CABINET AND ACCESSORY
SOLUTIONS YOU NEED TO GET
THE JOB DONE RIGHT.

PREMIER

With the highest quality materials and finest attention to detail, our Premier Series offers distinctive touches and superb craftsmanship. Whether you love traditional or modern design, the Premier Series has a look to fit your lifestyle. Features include full overlay doors, plywood boxes, a solid wood dovetail drawer box, as well as a 5 piece drawer head and soft close doors and drawers.

DESIGNER WHITE



ESPRESSO



SHAKER

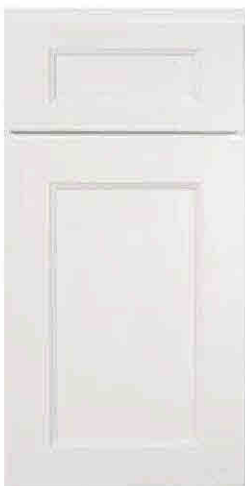
Modern & versatile, the design of these cabinets will add polish and sophistication to any space.



MODERN GRAY



BRIGHT WHITE

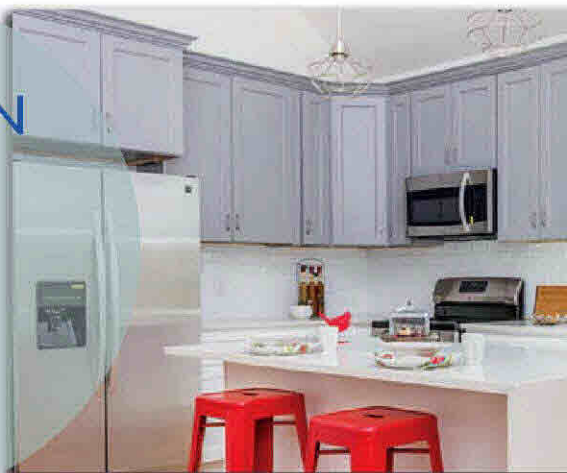


SLATE



BROOKLYN

Designed with industrial & modern charm, these cabinets will complement your home for years.



COUNTRY LINEN



MOCHA



CANVAS



LENOX

Detailed & elegant, the timeless charm ensures you will love these cabinets for a lifetime.



SELECT

Offering timeless style and quality, the Select Series is ideal for customers looking for a cost-conscious upgrade to their space. Features include solid wood doors and soft close drawer slides.

BRANDYWINE



ALEX

Timeless style & exceptional quality that provide a rich atmosphere.



The Select Series doors can be upgraded.
Door upgrade includes: Soft close door hinge

VALUE

Classic cabinets for any decor offering functionality and style at a budget-friendly price. Our Value Series includes full overlay doors, soft close hinges and a particle board cabinet box with a plywood back.

WHITE



ESPRESSO



CREME



MOCHA



All Value Series drawers can be upgraded.
Upgrades include:
Drawer box: 5/8" solid wood, dovetailed
Drawer slides: Under mount, full extension, metal, soft close

TAYLOR

Style at a budget-friendly price.

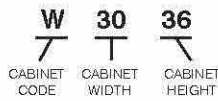


	Taylor White	Taylor Espresso	Taylor Creme	Taylor Mocha
	Value			
Cabinet Box	1/2" Particle Board w/ Plywood Back	1/2" Particle Board w/ Plywood Back	1/2" Particle Board w/ Plywood Back	1/2" Particle Board w/ Plywood Back
Drawer Box	1/2" Plywood, Straight	1/2" Plywood, Straight	1/2" Plywood, Straight	1/2" Plywood, Straight
Drawer Slides	Side Mount, 3/4 Extension, Epoxy/Vinyl Slides w/ Nylon Rollers*	Side Mount, 3/4 Extension, Epoxy/Vinyl Slides w/ Nylon Rollers*	Side Mount, 3/4 Extension, Epoxy/Vinyl Slides w/ Nylon Rollers*	Side Mount, 3/4 Extension, Epoxy/Vinyl Slides w/ Nylon Rollers*
Wood Species	Birch	Birch	Birch	Birch
Door Hinge	DTC 6 Way Adjustable Soft Close	DTC 6 Way Adjustable Soft Close	DTC 6 Way Adjustable Soft Close	DTC 6 Way Adjustable Soft Close
Shelves	Adjustable, 5/8" Plywood	Adjustable, 5/8" Plywood	Adjustable, 5/8" Plywood	Adjustable, 5/8" Plywood
Finish Color	White	Espresso Stain	Creme	Mocha Stain
Exterior Finish	White to Match Doors	Espresso to Match Doors	Creme to Match Doors	Mocha to Match Doors
Interior Finish	White	Espresso	Creme	Mocha
Glazing	No	No	Yes, Brown Lines	Yes, Black Lines
Base Corner Reinforcement	3/4" Plastic Corner Braces w/ Tabs	3/4" Plastic Corner Braces w/ Tabs	3/4" Plastic Corner Braces w/ Tabs	3/4" Plastic Corner Braces w/ Tabs
Face Frame	1 1/2" Rails and Stiles, Solid Wood	1 1/2" Rails and Stiles, Solid Wood	1 1/2" Rails and Stiles, Solid Wood	1 1/2" Rails and Stiles, Solid Wood
Full Overlay Door	5 Piece Recessed Panel	5 Piece Recessed Panel	5 Piece Recessed Panel	5 Piece Recessed Panel
Drawer Head	Slab	Slab	Slab	Slab
Approvals	CARB, E-1	CARB, E-1	CARB, E-1	CARB, E-1
Design & Structure	Meets Leading Industry Standards	Meets Leading Industry Standards	Meets Leading Industry Standards	Meets Leading Industry Standards
Assembly	Glue and Staples, No Cams or Brackets	Glue and Staples, No Cams or Brackets	Glue and Staples, No Cams or Brackets	Glue and Staples, No Cams or Brackets
Toe Kick Depth w/ TK Skin	3.75"	3.75"	3.75"	3.75"

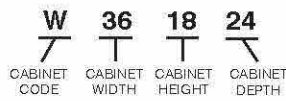
*All Value Series drawers can be upgraded. Upgrade includes: Drawer Box: 5/8" Solid Wood, Dovetailed; Drawer Slides: Under Mount, Full Extension, Metal, Soft Close with Ball Bearings. All Drawer Upgrade SKUs are notated with 'DU' on the Order Form

Wall Cabinet Coding

Standard (12" Deep)



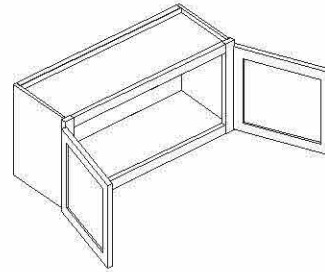
Refrigerator



Notes:

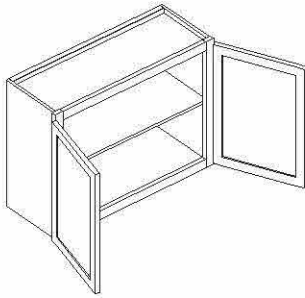
- Standard wall cabinets are 12" deep. Refrigerator cabinets are 24" deep.
- Add door thickness for total cabinet depth.
- Please refer to the Products by Cabinet Line chart to determine which products are carried for each cabinet line.

12" - 21" High Double Door Wall



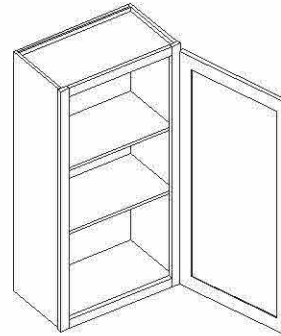
Item Code	Outer Dimensions		
	W	H	D
W3012	30	12	12
W3612	36	12	12
W3912	39	12	12
W3015	30	15	12
W3315	33	15	12
W3615	36	15	12
W3915	39	15	12
W3018	30	18	12
W3318	33	18	12
W3618	36	18	12
W3918	39	18	12
W3021	30	21	12

24" High Double Door Wall



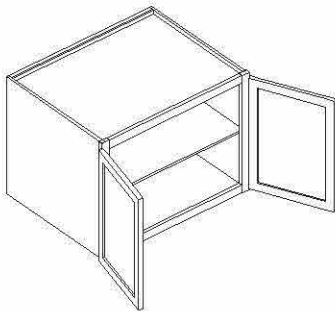
Item Code	Outer Dimensions		
	W	H	D
W3024	30	24	12
W3324	33	24	12
W3624	36	24	12
W3924	39	24	12

30" - 36" High Single Door Wall



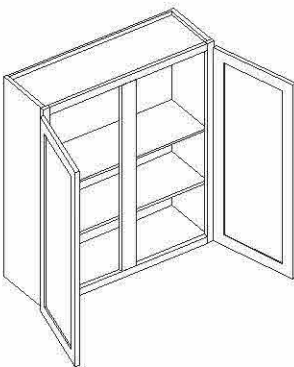
Item Code	Outer Dimensions		
	W	H	D
W930	9	30	12
W1230	12	30	12
W1530	15	30	12
W1830	18	30	12
W2130	21	30	12
W2430-1	24	30	12
W936	9	36	12
W1236	12	36	12
W1536	15	36	12
W1836	18	36	12
W2136	21	36	12

24" Deep Wall (Refrigerator Cabinet)



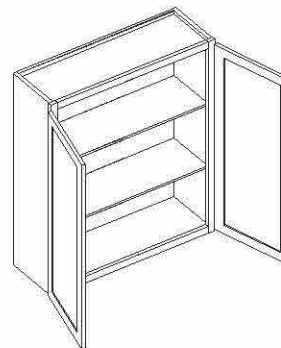
Item Code	Outer Dimensions		
	W	H	D
W361824	36	18	24
W362424	36	24	24

30" - 36" High Double Door with Center Stile



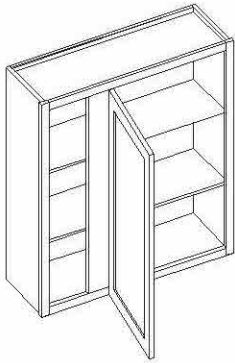
Item Code	Outer Dimensions		
	W	H	D
W4230	42	30	12
W4236	42	36	12

30" - 36" High Double Door Wall



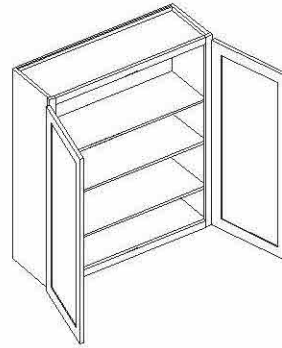
Item Code	Outer Dimensions		
	W	H	D
W2430-2	24	30	12
W2730	27	30	12
W3030	30	30	12
W3330	33	30	12
W3630	36	30	12
W3930	39	30	12
W2436-2	24	36	12
W2736	27	36	12
W3036	30	36	12
W3336	33	36	12
W3636	36	36	12
W3936	39	36	12

30" - 36" High Blind Wall



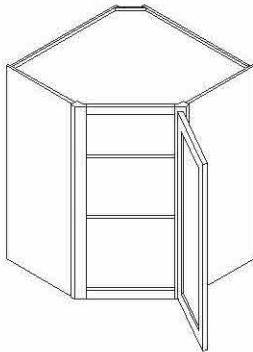
Item Code	Outer Dimensions		
	W	H	D
BW2430	24	30	12
BW3030	30	30	12
BW3630	36	30	12
BW2436	24	36	12
BW3036	30	36	12
BW3636	36	36	12

42" High Double Door Wall



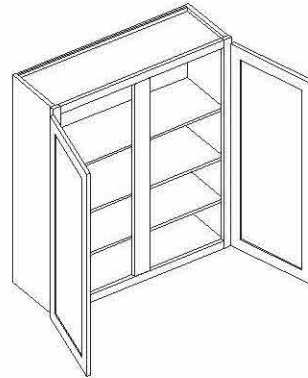
Item Code	Outer Dimensions		
	W	H	D
W2442-2	24	42	12
W2742	27	42	12
W3042	30	42	12
W3342	33	42	12
W3642	36	42	12
W3942	39	42	12

30" - 36" High Corner Wall



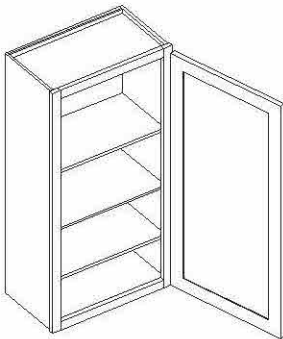
Item Code	Outer Dimensions		
	W	H	D
CW2430	24	30	12
CW2730	27	30	15
CW2436	24	36	12
CW2736	27	36	15

42" High Double Door Wall with Center Stile



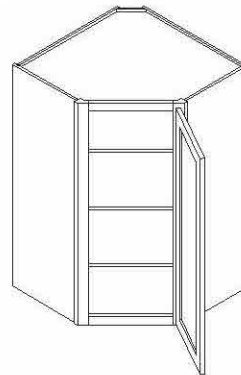
Item Code	Outer Dimensions		
	W	H	D
W4242	42	42	12

42" High Single Door Wall



Item Code	Outer Dimensions		
	W	H	D
W942	9	42	12
W1242	12	42	12
W1542	15	42	12
W1842	18	42	12
W2142	21	42	12

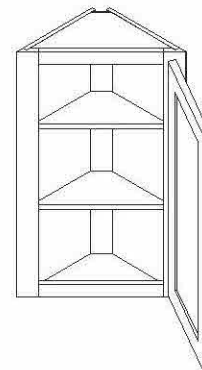
42" High Corner Wall



Item Code	Outer Dimensions		
	W	H	D
CW2442	24	42	12
CW2742	27	42	15

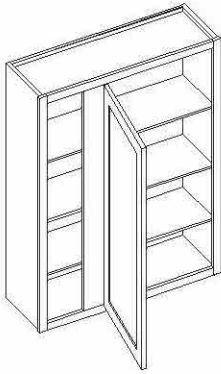


Wall End Cabinet



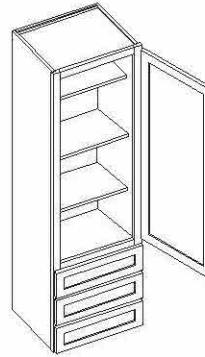
Item Code	Outer Dimensions		
	W	H	D
WEC30	12	30	12
WEC36	12	36	12
WEC42	12	42	12

42" High Blind Wall



Item Code	Outer Dimensions		
	W	H	D
BW2442	24	42	12
BW3042	30	42	12
BW3642	36	42	12

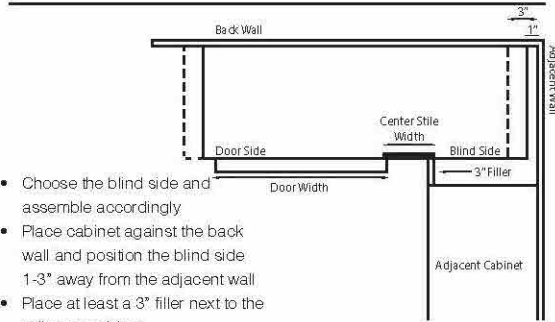
Wall Tower with 3 Drawers



Item Code	Outer Dimensions		
	W	H	D
DWR1548	15	48	15
DWR1554	15	54	15
DWR1560	15	60	15

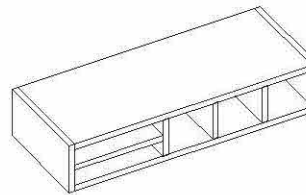
Installing a Blind Wall Cabinet

Proper installation ensures that the doors will open and show correct reveal



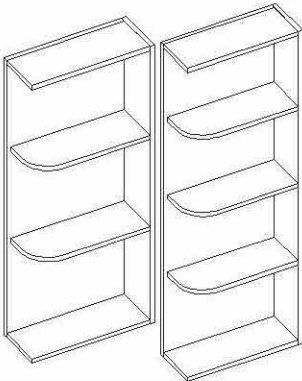
- Choose the blind side and assemble accordingly
- Place cabinet against the back wall and position the blind side 1-3" away from the adjacent wall
- Place at least a 3" filler next to the adjacent cabinet

30" Wall Organizer



Item Code	Outer Dimensions		
	W	H	D
WO306	30	6	12

Wall End Shelf

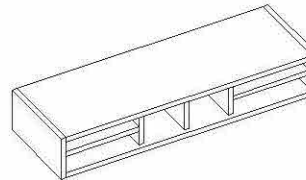


Item Code	Outer Dimensions		
	W	H	D
WQR630*	5	30	12
WQR636**	5	36	12
WQR642**	5	42	12

*WQR630 has two shelves

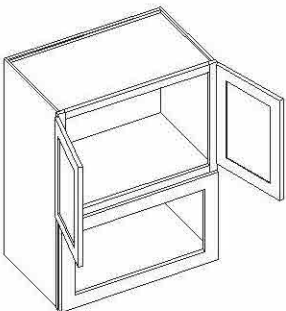
**WQR636, WQR642 have three shelves

36" Wall Organizer



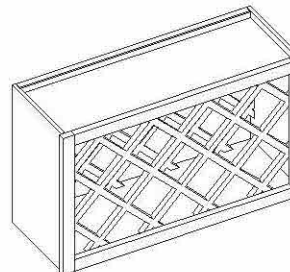
Item Code	Outer Dimensions		
	W	H	D
WO366	36	6	12

Wall Microwave Cabinet



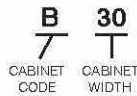
Item Code	Outer Dimensions		
	W	H	D
WMW303318	30	33	18
WMW303918	30	39	18
WMW304518	30	45	18

Wine Rack



Item Code	Outer Dimensions		
	W	H	D
WR3018	30	18	12

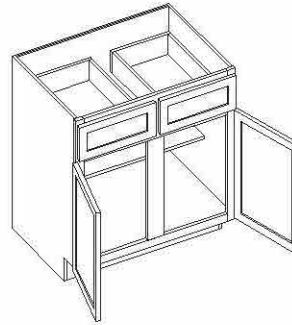
Base Cabinet Coding



Notes:

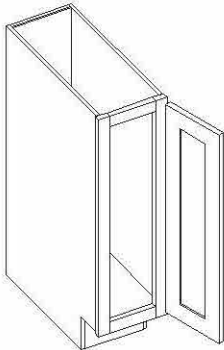
- Standard base cabinets are 24" deep and 34.5" high.
- Add door thickness for total cabinet depth.
- Please refer to the Products by Cabinet Line chart to determine which products are carried for each cabinet line.

Double Door Standard Base with Center Stile



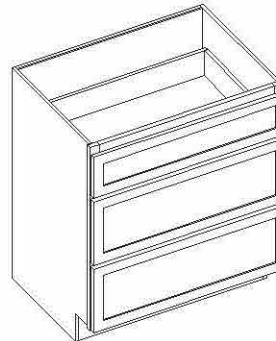
Item Code	Outer Dimensions		
	W	H	D
B42	42	34.5	24

Single Door Full Height Base



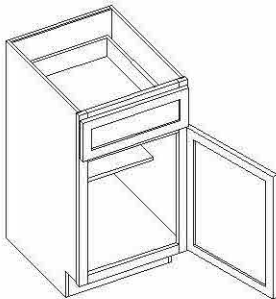
Item Code	Outer Dimensions		
	W	H	D
B09	9	34.5	24

Drawer Base



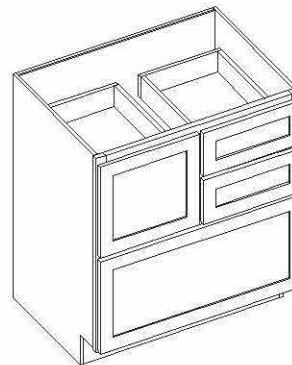
Item Code	Outer Dimensions		
	W	H	D
DB12-3	12	34.5	24
DB15-3	15	34.5	24
DB18-3	18	34.5	24
DB21-3	21	34.5	24
DB24-3	24	34.5	24
DB30-3	30	34.5	24
DB36-3	36	34.5	24

Single Door Standard Base



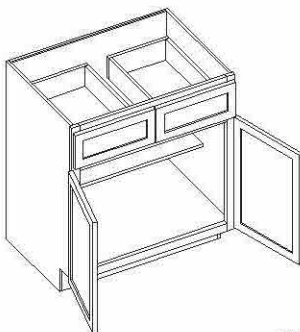
Item Code	Outer Dimensions		
	W	H	D
B12	12	34.5	24
B15	15	34.5	24
B18	18	34.5	24
B21	21	34.5	24
B24-1	24	34.5	24

Cooking Center



Item Code	Outer Dimensions		
	W	H	D
CC30	30	34.5	24

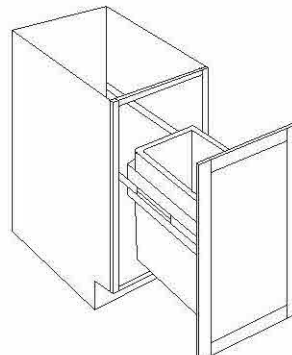
Double Door Standard Base



Item Code	Outer Dimensions		
	W	H	D
B24-2*	24	34.5	24
B27	27	34.5	24
B30	30	34.5	24
B33	33	34.5	24
B36	36	34.5	24
B39	39	34.5	24

*B24-2 has one drawer and two doors

Trash Can Base (Full Height)

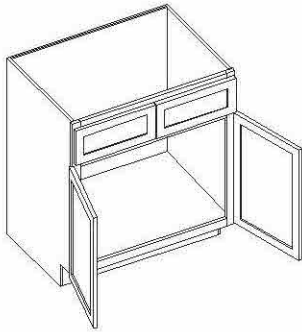


Item Code	Outer Dimensions		
	W	H	D
TRB18 FH-1*	18	34.5	24
TRB18 FH-2**	18	34.5	24

*Includes one 50 QT can

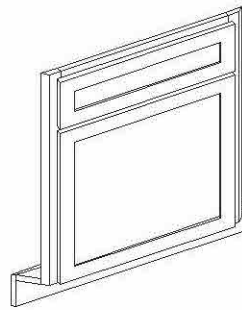
**Includes two 35 QT cans

Sink Base



Item Code	Outer Dimensions		
	W	H	D
SB30	30	34.5	24
SB33	33	34.5	24
SB36	36	34.5	24

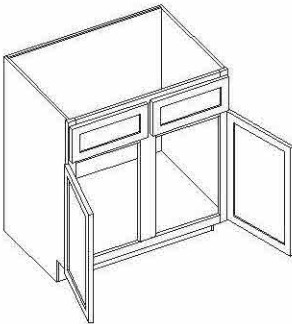
Corner Sink Front



Item Code	Outer Dimensions		
	W	H	D
CSF42	27	34.5	2
CSF-FLOOR*	48	0.5	48

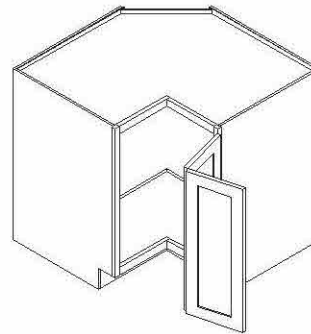
*Sink floor not pictured and sold separately

Sink Base with Center Stile



Item Code	Outer Dimensions		
	W	H	D
SB42	42	34.5	24
SB48	48	34.5	24

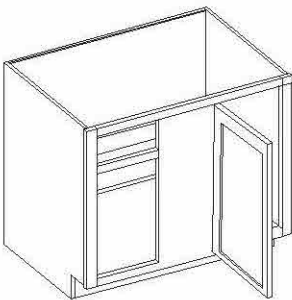
Easy Reach



Item Code	Outer Dimensions		
	W	H	D
ER33	33	34.5	24
ER36	36	34.5	24

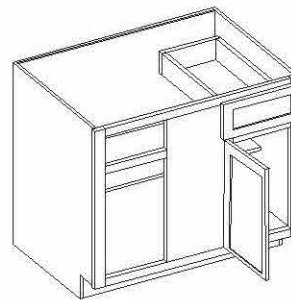
*Lazy Susan Kit sold separately

36" Blind Base



Item Code	Outer Dimensions		
	W	H	D
BB36	30	34.5	24

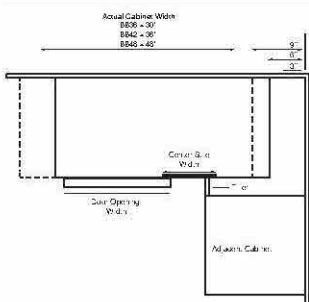
42" - 48" Blind Base



Item Code	Outer Dimensions		
	W	H	D
BB42	36	34.5	24
BB48	48	34.5	24

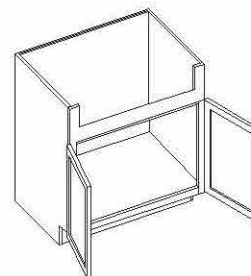
Installing a Blind Base Cabinet

Proper installation ensures that the drawer will clear hardware, and doors will open, and show correct reveal



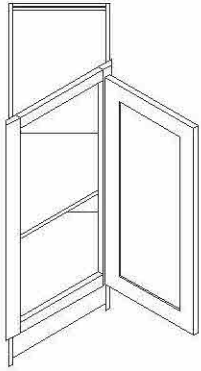
- Place the cabinet back against the back wall
 - BB36 and BB42 - position the blind side 6"-9" away from the adjacent wall
 - BB48 - position the blind side 0"-3" away from the adjacent wall
- Place at least a 3" filler next to adjacent cabinet

36" Farm Sink Base



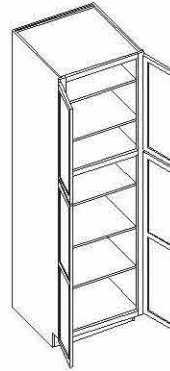
Item Code	Outer Dimensions		
	W	H	D
FSB36	36	34.5	24

Angle Base



Item Code	Outer Dimensions		
	W	H	D
TAB12 FHD-L	12	34.5	24
TAB12 FHD-R	12	34.5	24

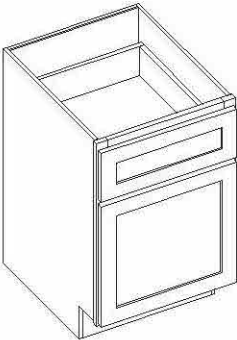
24" and 30" Double Door Pantry



Item Code	Outer Dimensions		
	W	H	D
P2484*	24	84	24
P2490*	24	90	24
P2496**	24	96	24
P3084*	30	84	24
P3090*	30	90	24
P3096**	30	96	24

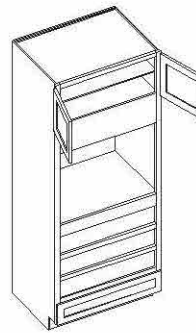
*Includes four shelves
**Includes five shelves

Desk Drawer Base



Item Code	Outer Dimensions		
	W	H	D
DDB18	18	29.5	24

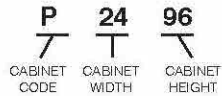
Oven Cabinet



Item Code	Outer Dimensions		
	W	H	D
OC3384	33	84	24
OC3390	33	90	24
OC3396	33	96	24

*Includes one drawer

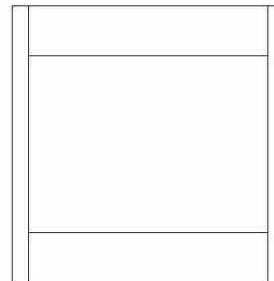
Tall Cabinet Coding



Notes:

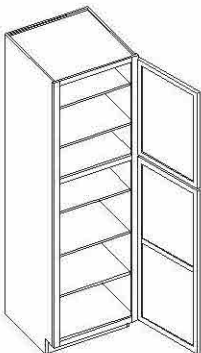
- Standard tall cabinets are 24" deep.
- Add door thickness for total cabinet depth.
- Please refer to the Products by Cabinet Line chart to determine which products are carried for each cabinet line.

Oven Cabinet Overlay Panel



Item Code	Outer Dimensions		
	W	H	D
OP3333	33	33	0.75
OP3348	33	48	0.75
OP3353	33	53	0.75
OP3362	33	62	0.75

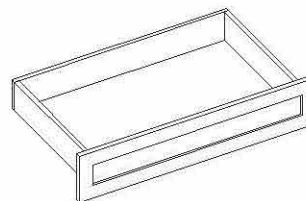
Single Door Pantry



Item Code	Outer Dimensions		
	W	H	D
P1884*	18	84	24
P1890*	18	90	24
P1896**	18	96	24

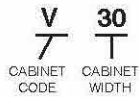
*Includes four shelves
**Includes five shelves

Oven Cabinet Drawer



Item Code	Outer Dimensions		
	W	H	D
OCD337	32.5	6.75	24

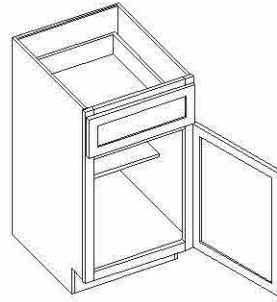
Vanity Cabinet Coding



Notes:

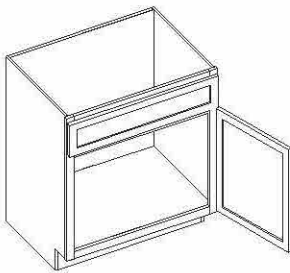
- Standard vanity cabinets are 21" deep.
- Add door thickness for total cabinet depth.
- Please refer to the Products by Cabinet Line chart to determine which products are carried for each cabinet line.

Single Door Vanity Base



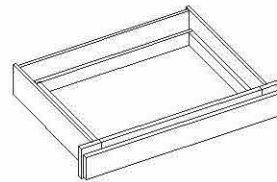
Item Code	Outer Dimensions		
	W	H	D
VB12	12	34.5	21
VB15	15	34.5	21
VB18	18	34.5	21

Single Door Vanity



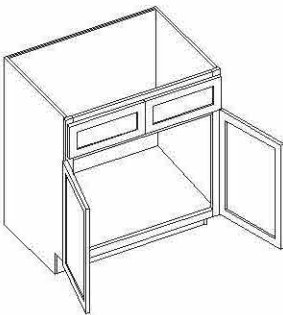
Item Code	Outer Dimensions		
	W	H	D
V24-1	24	34.5	21

24" Vanity Drawer



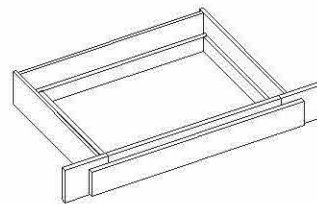
Item Code	Outer Dimensions		
	W	H	D
KD24	23.5	4.75	21

Double Door Vanity



Item Code	Outer Dimensions		
	W	H	D
V24-2	24	34.5	21
V27	27	34.5	21
V30	30	34.5	21
V33	33	34.5	21
V36	36	34.5	21

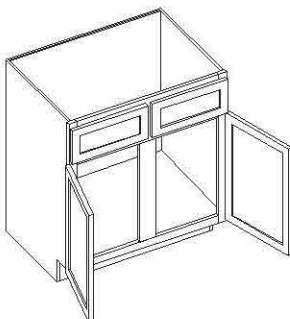
36" Vanity Drawer



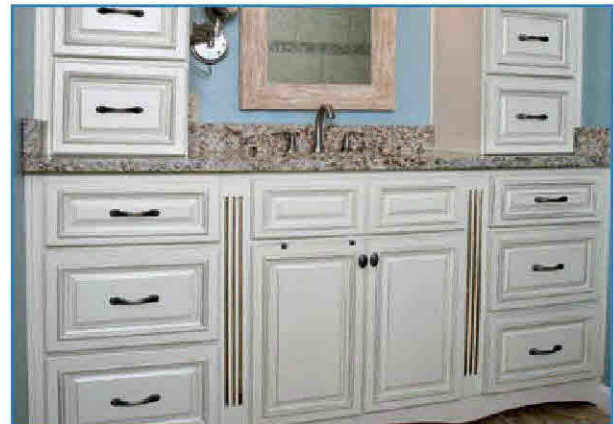
Item Code	Outer Dimensions		
	W	H	D
KD36	29.5	4.75	21

*Adjustable Sides
*Trimable to 30"

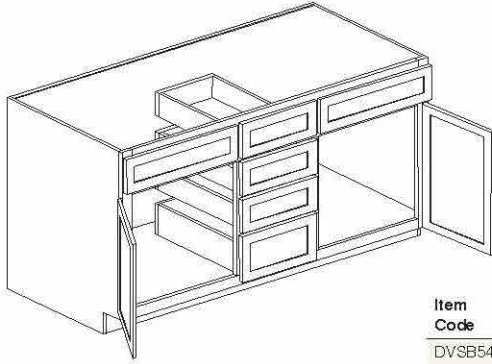
Double Door Vanity with Center Stile



Item Code	Outer Dimensions		
	W	H	D
V42	42	34.5	21

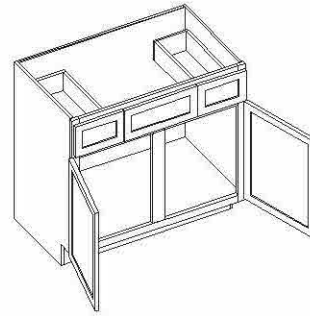


Double Vanity Sink Base



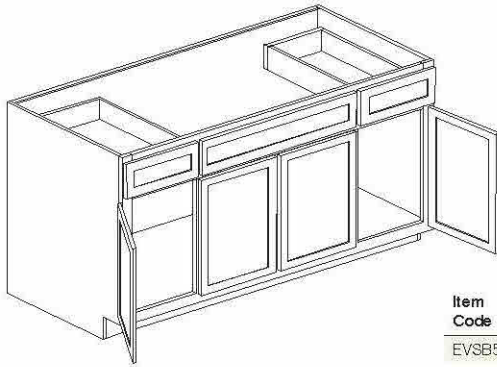
Item Code	Outer Dimensions		
	W	H	D
DVSB54	54	34.5	21
DVSB60	60	34.5	21

Vanity Sink Base



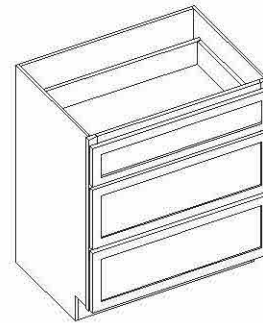
Item Code	Outer Dimensions		
	W	H	D
VSB36	36	34.5	21
VSB42	42	34.5	21
VSB48	48	34.5	21

Extended Vanity Sink Base



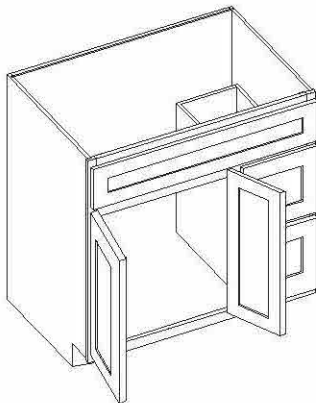
Item Code	Outer Dimensions		
	W	H	D
EVSB54	54	34.5	21
EVSB60	60	34.5	21

Vanity Drawer Base

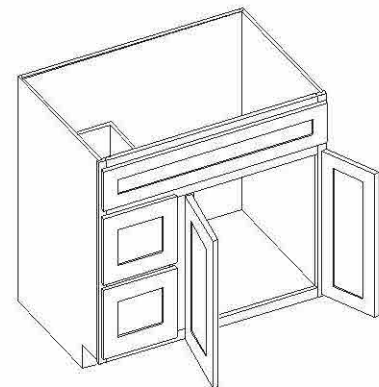


Item Code	Outer Dimensions		
	W	H	D
VDB12	12	34.5	21
VDB15	15	34.5	21
VDB18	18	34.5	21
VDB21	21	34.5	21
VDB24	24	34.5	21

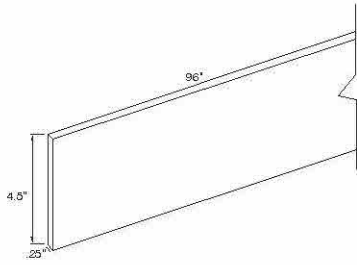
Vanity Combo Cabinet



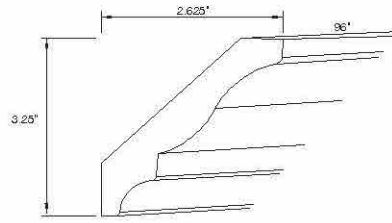
Item Code	Outer Dimensions		
	W	H	D
VSBDR36	36	34.5	21
VSBDL36	36	34.5	21



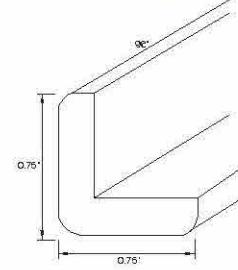
Toe Kick - TKS8



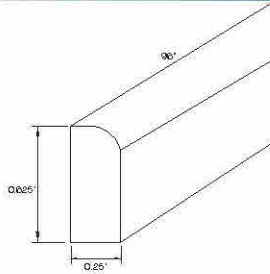
Large Crown Molding - BCM8



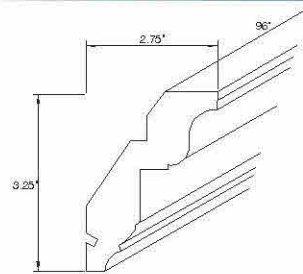
Outside Corner Molding - OCM8



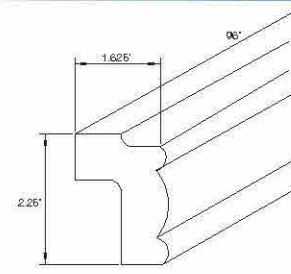
Scribe - SCRIBE



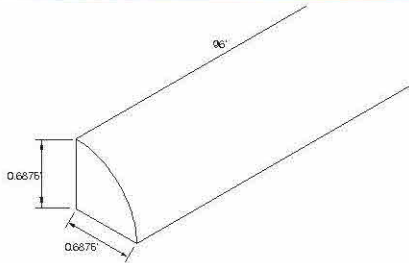
Royal Crown Molding - RCM8



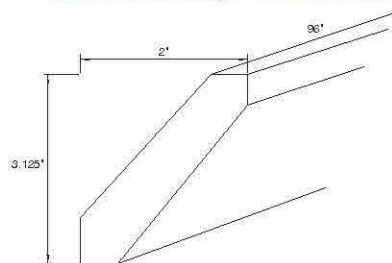
Traditional Light Rail Molding - LRM8



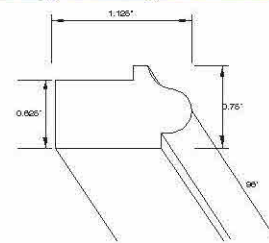
Shoe - SHOE



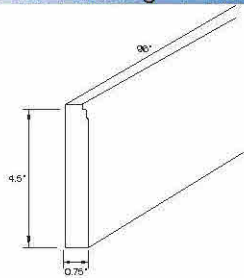
Shaker Crown Molding - SCM8



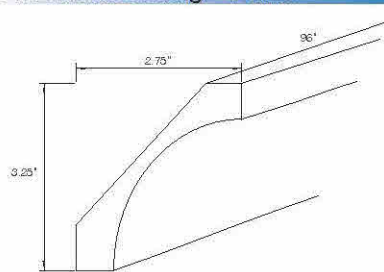
Bottom Edge Molding - BEM8



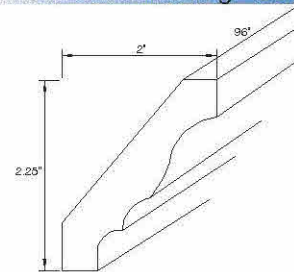
Furniture Base Molding - FBM8



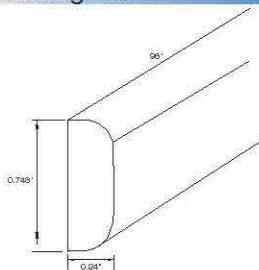
Cove Crown Molding - COM8



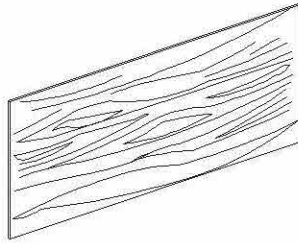
Traditional Crown Molding - CM8



Batton Molding - BAM8

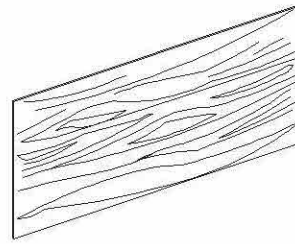


Back Panel - Long Grain



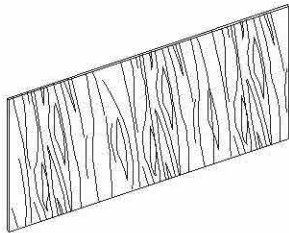
Item Code	Outer Dimensions		
	W	H	D
BPLG4896	48	96	0.25

1/2" Thick Finished Plywood Filler



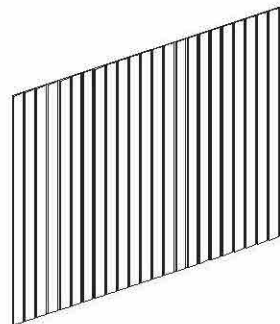
Item Code	Outer Dimensions		
	W	H	D
PSP4896	96	48	0.5

Back Panel - Short Grain



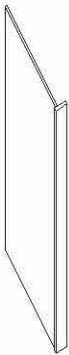
Item Code	Outer Dimensions		
	W	H	D
BPSG9648	96	48	0.25

Bead Board



Item Code	Outer Dimensions		
	W	H	D
BBP4842	48	42	0.25

Dishwasher End Panel



Item Code	Outer Dimensions		
	W	H	D
DWR3	3	34.5	24

Tall End Panel



Item Code	Outer Dimensions		
	W	H	D
TEP3096	1.5	96	30

Bookcase End



Item Code	Outer Dimensions		
	W	H	D
BCE1596	1.5	96	15

Filler



Item Code	Outer Dimensions		
	W	H	D
F396	3	96	0.75
F696	6	96	0.75

*All sides finished

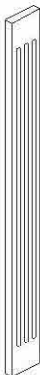
Overlay Filler



Item Code	Outer Dimensions		
	W	H	D
OLF330	2.5	28.75	0.75
OLF336	2.5	34.75	0.75
OLF342	2.5	40.75	0.75
OLF384	2.5	82.75	0.75
OLF390	2.5	88.75	0.75
OLF396	2.5	94.75	0.75

*All sides finished

Wall Fluted Filler



Item Code	Outer Dimensions		
	W	H	D
WFF330	3	30	0.75
WFF336	3	36	0.75
WFF342	3	42	0.75

*All sides finished

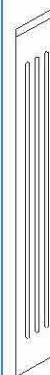
Fluted Filler



Item Code	Outer Dimensions		
	W	H	D
FF396	3	96	0.75

*All sides finished

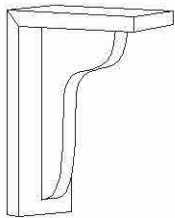
Angle Fluted Filler



Item Code	Outer Dimensions		
	W	H	D
AF-330	3	30	3

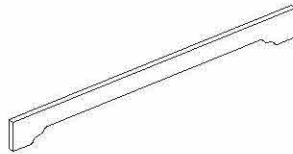
*All sides finished

Corbel - Basic Medium



Item Code	Outer Dimensions		
	W	H	D
CORSM	3	10.5	7.5

Furniture Valance

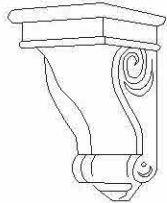


Item Code	Outer Dimensions		
	W	H	D
VFURN31	31	4.5	0.75
VFURN37	37	4.5	0.75
VFURN43	43	4.5	0.75

Column and Spindle System

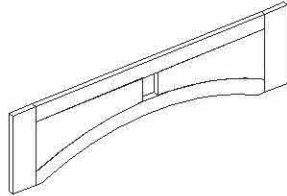
Item Code	Outer Dimensions		
	W	H	D
BLOCK	2.5	6.75	2.5
SPINDLE	2.5	3	2.5
FC36	1.5	36	1.5
FO36	1.5	96	1.5

Corbel - Ornate Medium



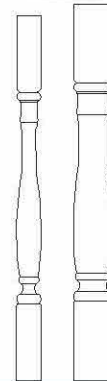
Item Code	Outer Dimensions		
	W	H	D
CORCM	3	10	5.75

Raised Panel Valance



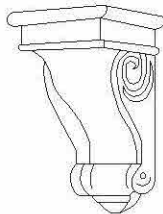
Item Code	Outer Dimensions		
	W	H	D
VRP42	42	12	0.75
VRP48	48	12	0.75

Turned Post



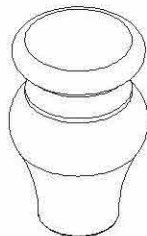
Item Code	Outer Dimensions		
	W	H	D
TPOSTP3	3	35.5	3
TPOSTP5	5	35.5	5

Corbel - Ornate Large



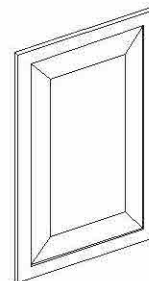
Item Code	Outer Dimensions		
	W	H	D
CORCL	4.25	14	6.5

Bunfeet



Item Code	Outer Dimensions		
	W	H	D
TBUNFOOT	3	4.5	3

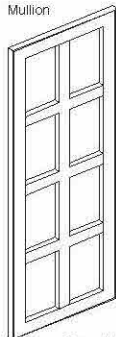
Decorative Base/Wall Panels



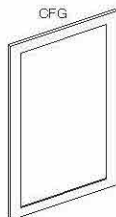
Item Code	Outer Dimensions		
	W	H	D
DWP1230	11.5	28.75	0.75
DWP1236	11.5	34.75	0.75
DWP1242	11.5	40.75	0.75
DWP2430	23.5	28.75	0.75

Mullion and Cut For Glass Doors

Mullion



CFG



Item Code	Outer Dimensions		
	W	H	D
CFG / MDW1530	14.6875	28.75	0.75
CFG / MDW1536	14.6875	34.75	0.75
CFG / MDW1542	14.6875	40.75	0.75
CFG / MDW1830	17.6875	28.75	0.75
CFG / MDW1836	17.6875	34.75	0.75
CFG / MDW1842	17.6875	40.75	0.75
CFG / MDCW2430	14.5	28.75	0.75
CFG / MDCW2436	14.5	34.75	0.75
CFG / MDCW2442	14.5	40.75	0.75

*Brooklyn are Cut for Glass not Mullions

*All Cut for Glass SKUs are notated as 'CFG' on the Order Form

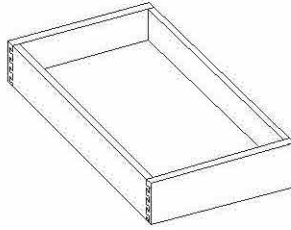
Mullion Door Usage Guide

Item Code	Designed to Fit
CFG / MDW1530	W1530, W3030
CFG / MDW1536	W1536, W3036
CFG / MDW1542	W1542, W3042
CFG / MDW1830	W1830, W3630
CFG / MDW1836	W1836, W3636
CFG / MDW1842	W1842, W3642
CFG / MDCW2430	CW2430, CW2730
CFG / MDCW2436	CW2436, CW2736
CFG / MDCW2442	CW2442, CW2742

*Brooklyn are Cut for Glass not Mullions

*All Cut for Glass SKUs are notated as 'CFG' on the Order Form

Roll Out Tray

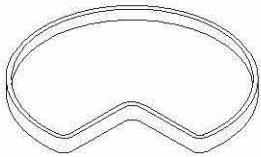


Item Code	Outer Dimensions		
	W	H	D
ROT15	11.4375	2.35	21
ROT18	14.375	2.35	21
ROT21	17.4375	2.35	21
ROT24	20.25	2.35	21
ROT27	23.125	2.35	21
ROT30	26.125	2.35	21
ROT36	32.125	2.35	21

Roll Out Tray Usage Guide

Item Code	Designed to Fit
ROT15	B15
ROT18	B18, P1884, P1890, P1896
ROT21	B21
ROT24	B24, P2484, P2490, P2496
ROT27	B27
ROT30	B30
ROT36	B36

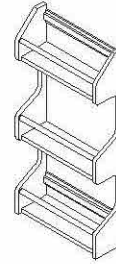
Lazy Susan Kit



Item Code	Outer Dimensions		
	W	H	D
LSK	29	1.5	29

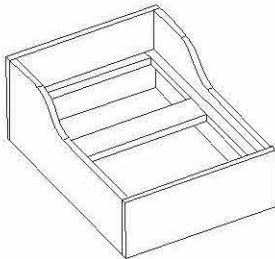
*Includes two trays

Spice Rack Door Attachment



Item Code	Outer Dimensions		
	W	H	D
SRD12	11.5	24	4
SRD15	14.5	24	4

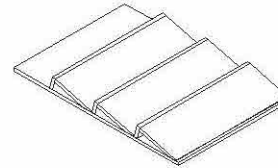
Trash Can Insert for B18



Item Code	Outer Dimensions		
	W	H	D
TCCK*	14.625	4.125	19.75

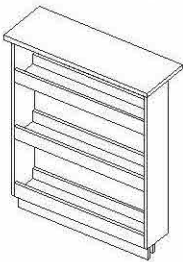
*Includes two 35 QT cans

Spice Rack Tray Insert



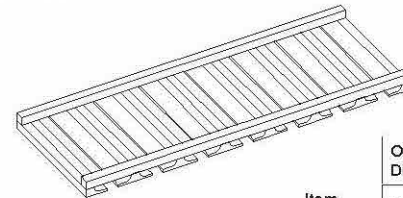
Item Code	Outer Dimensions		
	W	H	D
STI14	13.375	1.094	19.75
STI20	19.75	1.094	19.75

Spice Rack Insert



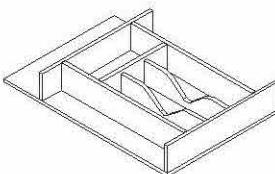
Item Code	Outer Dimensions		
	W	H	D
SR19	5.75	24	20.5

Stemware Rack



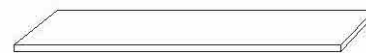
Item Code	Outer Dimensions		
	W	H	D
SWR3012	28.5	1.5	10.5

Cutlery Drawer Insert



Item Code	Outer Dimensions		
	W	H	D
CDI14	13.375	1.75	19.75
CDI20	19.75	1.75	19.75

Shelf



Item Code	Outer Dimensions		
	W	H	D
SHELF1296	96	0.625	12
SHELF2496	96	0.625	24

*All sides finished

Item Code	Item Description	Shaker Designer White	Shaker Espresso	Brooklyn Bright White	Brooklyn Modern Gray	Brooklyn Slate	Lenox Mocha	Lenox Canvas	Lenox Country Linen	Alex Brandwine	Taylor White	Taylor Espresso	Taylor Creme	Taylor Mocha	
Premier										Select	Value				
Wall Cabinets															
W3012	Double Door Wall Cabinet - 30" W x 12" H	✓	✓	✓	✓	✓	✓	✓	✓	✓	✓	✓	✓	✓	
W3612	Double Door Wall Cabinet - 36" W x 12" H	✓	✓	✓	✓	✓	✓	✓	✓	✓	✓	✓	✓	✓	
W3912	Double Door Wall Cabinet - 39" W x 12" H	-	-	✓	✓	✓	✓	✓	✓	-	-	-	-	-	
W3015	Double Door Wall Cabinet - 30" W x 15" H	✓	✓	✓	✓	✓	✓	✓	✓	✓	✓	✓	✓	✓	
W3315	Double Door Wall Cabinet - 33" W x 15" H	✓	✓	✓	✓	✓	✓	✓	✓	✓	✓	✓	✓	✓	
W3615	Double Door Wall Cabinet - 36" W x 15" H	✓	✓	✓	✓	✓	✓	✓	✓	✓	✓	✓	✓	✓	
W3915	Double Door Wall Cabinet - 39" W x 15" H	-	-	✓	✓	✓	✓	✓	✓	-	-	-	-	-	
W3018	Double Door Wall Cabinet - 30" W x 18" H	✓	✓	✓	✓	✓	✓	✓	✓	✓	✓	✓	✓	✓	
W3318	Double Door Wall Cabinet - 33" W x 18" H	✓	✓	✓	✓	✓	✓	✓	✓	-	-	-	-	-	
W3618	Double Door Wall Cabinet - 36" W x 18" H	✓	✓	✓	✓	✓	✓	✓	✓	✓	✓	✓	✓	✓	
W3918	Double Door Wall Cabinet - 39" W x 18" H	-	-	✓	✓	✓	✓	✓	✓	-	-	-	-	-	
W3021	Double Door Wall Cabinet - 30" W x 21" H	✓	✓	✓	✓	✓	✓	✓	✓	✓	-	-	-	-	
W3024	Double Door Wall Cabinet - 30" W x 24" H	✓	✓	✓	✓	✓	✓	✓	✓	✓	✓	✓	✓	✓	
W3324	Double Door Wall Cabinet - 33" W x 24" H	✓	✓	✓	✓	✓	✓	✓	✓	✓	-	-	-	-	
W3624	Double Door Wall Cabinet - 36" W x 24" H	✓	✓	✓	✓	✓	✓	✓	✓	✓	✓	✓	✓	✓	
W3924	Double Door Wall Cabinet - 39" W x 24" H	-	-	✓	✓	✓	✓	✓	✓	-	-	-	-	-	
W361824	Deep Wall Cabinet - 36" W x 18" H x 24" D	✓	✓	✓	✓	✓	✓	✓	✓	-	✓	✓	✓	✓	
W362424	Deep Wall Cabinet - 36" W x 24" H x 24" D	✓	✓	✓	✓	✓	✓	✓	✓	-	✓	✓	✓	✓	
W930	Single Door Wall Cabinet - 9" W x 30" H	✓	✓	✓	✓	✓	✓	✓	✓	✓	✓	✓	✓	✓	
W1230	Single Door Wall Cabinet - 12" W x 30" H	✓	✓	✓	✓	✓	✓	✓	✓	✓	✓	✓	✓	✓	
W1530	Single Door Wall Cabinet - 15" W x 30" H	✓	✓	✓	✓	✓	✓	✓	✓	✓	✓	✓	✓	✓	
W1830	Single Door Wall Cabinet - 18" W x 30" H	✓	✓	✓	✓	✓	✓	✓	✓	✓	✓	✓	✓	✓	
W2130	Single Door Wall Cabinet - 21" W x 30" H	✓	✓	✓	✓	✓	✓	✓	✓	✓	✓	✓	✓	✓	
W2430-1	Single Door Wall Cabinet - 24" W x 30" H	-	-	-	-	-	-	-	-	✓	-	-	-	-	
W936	Single Door Wall Cabinet - 9" W x 36" H	✓	✓	✓	✓	✓	✓	✓	✓	✓	✓	✓	✓	✓	
W1236	Single Door Wall Cabinet - 12" W x 36" H	✓	✓	✓	✓	✓	✓	✓	✓	✓	✓	✓	✓	✓	
W1536	Single Door Wall Cabinet - 15" W x 36" H	✓	✓	✓	✓	✓	✓	✓	✓	✓	✓	✓	✓	✓	
W1836	Single Door Wall Cabinet - 18" W x 36" H	✓	✓	✓	✓	✓	✓	✓	✓	✓	✓	✓	✓	✓	
W2136	Single Door Wall Cabinet - 21" W x 36" H	✓	✓	✓	✓	✓	✓	✓	✓	✓	✓	✓	✓	✓	
W2430-2	Double Door Wall Cabinet - 24" W x 30" H	✓	✓	✓	✓	✓	✓	✓	✓	-	✓	✓	✓	✓	
W2730	Double Door Wall Cabinet - 27" W x 30" H	✓	✓	✓	✓	✓	✓	✓	✓	✓	✓	✓	✓	✓	
W3030	Double Door Wall Cabinet - 30" W x 30" H	✓	✓	✓	✓	✓	✓	✓	✓	✓	✓	✓	✓	✓	
W3330	Double Door Wall Cabinet - 33" W x 30" H	✓	✓	✓	✓	✓	✓	✓	✓	✓	✓	✓	✓	✓	
W3630	Double Door Wall Cabinet - 36" W x 30" H	✓	✓	✓	✓	✓	✓	✓	✓	✓	✓	✓	✓	✓	
W3930	Double Door Wall Cabinet - 39" W x 30" H	✓	✓	✓	✓	✓	✓	✓	✓	-	-	-	-	-	
W2436-2	Double Door Wall Cabinet - 24" W x 36" H	✓	✓	✓	✓	✓	✓	✓	✓	✓	✓	✓	✓	✓	
W2736	Double Door Wall Cabinet - 27" W x 36" H	✓	✓	✓	✓	✓	✓	✓	✓	✓	✓	✓	✓	✓	
W3036	Double Door Wall Cabinet - 30" W x 36" H	✓	✓	✓	✓	✓	✓	✓	✓	✓	✓	✓	✓	✓	
W3336	Double Door Wall Cabinet - 33" W x 36" H	✓	✓	✓	✓	✓	✓	✓	✓	✓	✓	✓	✓	✓	
W3636	Double Door Wall Cabinet - 36" W x 36" H	✓	✓	✓	✓	✓	✓	✓	✓	✓	✓	✓	✓	✓	
W3936	Double Door Wall Cabinet - 39" W x 36" H	✓	✓	✓	✓	✓	✓	✓	✓	-	-	-	-	-	
W4230	Double Door Wall Cabinet - 42" W x 30" H	✓	✓	✓	✓	✓	✓	✓	✓	✓	-	-	-	-	
W4236	Double Door Wall Cabinet - 42" W x 36" H	✓	✓	✓	✓	✓	✓	✓	✓	✓	-	-	-	-	
BW2430	Blind Wall Cabinet - 24" W x 30" H	✓	✓	✓	✓	✓	✓	✓	✓	-	-	-	-	-	
BW3030	Blind Wall Cabinet - 30" W x 30" H	✓	✓	✓	✓	✓	✓	✓	✓	✓	✓	✓	✓	✓	
BW3630	Blind Wall Cabinet - 36" W x 30" H	✓	✓	✓	✓	✓	✓	✓	✓	✓	✓	✓	✓	✓	
BW2436	Blind Wall Cabinet - 24" W x 36" H	✓	✓	✓	✓	✓	✓	✓	✓	-	-	-	-	-	
BW3036	Blind Wall Cabinet - 30" W x 36" H	✓	✓	✓	✓	✓	✓	✓	✓	✓	✓	✓	✓	✓	
BW3636	Blind Wall Cabinet - 36" W x 36" H	✓	✓	✓	✓	✓	✓	✓	✓	✓	✓	✓	✓	✓	
CW2430	Corner Wall Cabinet - 24" W x 30" H	✓	✓	✓	✓	✓	✓	✓	✓	✓	✓	✓	✓	✓	
CW2730	Corner Wall Cabinet - 27" W x 30" H	✓	✓	✓	✓	✓	✓	✓	✓	-	✓	✓	✓	✓	

Item Code	Item Description	Shaker Designer White	Shaker Espresso	Brooklyn Bright White	Brooklyn Modern Gray	Brooklyn Slate	Lenox Mocha	Lenox Canvas	Lenox Country	Alex Brandwine	Taylor White	Taylor Espresso	Taylor Creme	Taylor Mocha	
Premier											Select	Value			
Wall Cabinets															
CW2436	Corner Wall Cabinet - 24" W x 36" H	✓	✓	✓	✓	✓	✓	✓	✓	✓	✓	✓	✓	✓	✓
CW2736	Corner Wall Cabinet - 27" W x 36" H	✓	✓	✓	✓	✓	✓	✓	✓	✓	✓	✓	✓	✓	✓
W942	Single Door Wall Cabinet - 9" W x 42" H	✓	✓	✓	✓	✓	✓	✓	✓	✓	✓	✓	✓	✓	✓
W1242	Single Door Wall Cabinet - 12" W x 42" H	✓	✓	✓	✓	✓	✓	✓	✓	✓	✓	✓	✓	✓	✓
W1542	Single Door Wall Cabinet - 15" W x 42" H	✓	✓	✓	✓	✓	✓	✓	✓	✓	✓	✓	✓	✓	✓
W1842	Single Door Wall Cabinet - 18" W x 42" H	✓	✓	✓	✓	✓	✓	✓	✓	✓	✓	✓	✓	✓	✓
W2142	Single Door Wall Cabinet - 21" W x 42" H	✓	✓	✓	✓	✓	✓	✓	✓	✓	✓	✓	✓	✓	✓
W2442-2	Double Door Wall Cabinet - 24" W x 42" H	✓	✓	✓	✓	✓	✓	✓	✓	✓	✓	✓	✓	✓	✓
W2742	Double Door Wall Cabinet - 27" W x 42" H	✓	✓	✓	✓	✓	✓	✓	✓	✓	✓	✓	✓	✓	✓
W3042	Double Door Wall Cabinet - 30" W x 42" H	✓	✓	✓	✓	✓	✓	✓	✓	✓	✓	✓	✓	✓	✓
W3342	Double Door Wall Cabinet - 33" W x 42" H	✓	✓	✓	✓	✓	✓	✓	✓	✓	✓	✓	✓	✓	✓
W3642	Double Door Wall Cabinet - 36" W x 42" H	✓	✓	✓	✓	✓	✓	✓	✓	✓	✓	✓	✓	✓	✓
W3942	Double Door Wall Cabinet - 39" W x 42" H	✓	✓	✓	✓	✓	✓	✓	✓	✓	✓	✓	✓	✓	✓
W4242	Double Door Wall Cabinet - 42" W x 42" H	✓	✓	✓	✓	✓	✓	✓	✓	✓	✓	✓	✓	✓	✓
BW2442	Blind Wall Cabinet - 24" W x 42" H	✓	✓	✓	✓	✓	✓	✓	✓	✓	✓	✓	✓	✓	✓
BW3042	Blind Wall Cabinet - 30" W x 42" H	✓	✓	✓	✓	✓	✓	✓	✓	✓	✓	✓	✓	✓	✓
BW3642	Blind Wall Cabinet - 36" W x 42" H	✓	✓	✓	✓	✓	✓	✓	✓	✓	✓	✓	✓	✓	✓
CW2442	Corner Wall Cabinet - 24" W x 42" H	✓	✓	✓	✓	✓	✓	✓	✓	✓	✓	✓	✓	✓	✓
CW2742	Corner Wall Cabinet - 27" W x 42" H	✓	✓	✓	✓	✓	✓	✓	✓	✓	✓	✓	✓	✓	✓
WEC30	Wall End Cabinet - 12" W x 30" H x 12" D	✓	✓	✓	✓	✓	✓	✓	✓	✓	✓	✓	✓	✓	✓
WEC36	Wall End Cabinet - 12" W x 36" H x 12" D	✓	✓	✓	✓	✓	✓	✓	✓	✓	✓	✓	✓	✓	✓
WEC42	Wall End Cabinet - 12" W x 42" H x 12" D	✓	✓	✓	✓	✓	✓	✓	✓	✓	✓	✓	✓	✓	✓
WQR630	Wall End Shelf - 6" W x 30" H x 12" D	✓	✓	✓	✓	✓	✓	✓	✓	✓	✓	✓	✓	✓	✓
WQR636	Wall End Shelf - 6" W x 36" H x 12" D	✓	✓	✓	✓	✓	✓	✓	✓	✓	✓	✓	✓	✓	✓
WQR642	Wall End Shelf - 6" W x 42" H x 12" D	✓	✓	✓	✓	✓	✓	✓	✓	✓	✓	✓	✓	✓	✓
WMW303318	Wall Microwave Cabinet - 30" W x 33" H x 18" D	✓	✓	✓	✓	✓	✓	✓	✓	✓	✓	✓	✓	✓	✓
WMW303918	Wall Microwave Cabinet - 30" W x 39" H x 18" D	✓	✓	✓	✓	✓	✓	✓	✓	✓	✓	✓	✓	✓	✓
WMW304518	Wall Microwave Cabinet - 30" W x 45" H x 18" D	✓	✓	✓	✓	✓	✓	✓	✓	✓	✓	✓	✓	✓	✓
DWR1548	Wall Twr w/ 3 Drws - 15" W x 48" H x 14.5" D	✓	✓	✓	✓	✓	✓	✓	✓	✓	✓	✓	✓	✓	✓
DWR1554	Wall Twr w/ 3 Drws - 15" W x 54" H x 14.5" D	✓	✓	✓	✓	✓	✓	✓	✓	✓	✓	✓	✓	✓	✓
DWR1560	Wall Twr w/ 3 Drws - 15" W x 60" H x 14.5" D	✓	✓	✓	✓	✓	✓	✓	✓	✓	✓	✓	✓	✓	✓
WO306	Wall Organizer - 30" W x 6" H x 12" D	✓	✓	✓	✓	✓	✓	✓	✓	✓	✓	✓	✓	✓	✓
WO366	Wall Organizer - 36" W x 6" H x 12" D	-	-	✓	✓	✓	✓	✓	✓	✓	✓	✓	✓	✓	✓
WR3018	Wine Rack - 30" W x 18" H x 12" D	✓	✓	✓	✓	✓	✓	✓	✓	✓	✓	✓	✓	✓	✓
Base Cabinets															
B09	Single Door Full Height Base Cabinet - 9" W	✓	✓	✓	✓	✓	✓	✓	✓	✓	✓	✓	✓	✓	✓
B12	Single Door Standard Base Cabinet - 12" W	✓	✓	✓	✓	✓	✓	✓	✓	✓	✓	✓	✓	✓	✓
B15	Single Door Standard Base Cabinet - 15" W	✓	✓	✓	✓	✓	✓	✓	✓	✓	✓	✓	✓	✓	✓
B18	Single Door Standard Base Cabinet - 18" W	✓	✓	✓	✓	✓	✓	✓	✓	✓	✓	✓	✓	✓	✓
B21	Single Door Standard Base Cabinet - 21" W	✓	✓	✓	✓	✓	✓	✓	✓	✓	✓	✓	✓	✓	✓
B24-1	Single Door Standard Base Cabinet - 24" W	-	-	-	-	-	-	-	-	✓	-	-	-	-	-
B24-2	Double Door Standard Base Cabinet - 24" W	✓	✓	✓	✓	✓	✓	✓	✓	✓	✓	✓	✓	✓	✓
B27	Double Door Standard Base Cabinet - 27" W	✓	✓	✓	✓	✓	✓	✓	✓	✓	✓	✓	✓	✓	✓
B30	Double Door Standard Base Cabinet - 30" W	✓	✓	✓	✓	✓	✓	✓	✓	✓	✓	✓	✓	✓	✓
B33	Double Door Standard Base Cabinet - 33" W	✓	✓	✓	✓	✓	✓	✓	✓	✓	✓	✓	✓	✓	✓
B36	Double Door Standard Base Cabinet - 36" W	✓	✓	✓	✓	✓	✓	✓	✓	✓	✓	✓	✓	✓	✓
B39	Double Door Standard Base Cabinet - 39" W	✓	✓	✓	✓	✓	✓	✓	✓	✓	✓	✓	✓	✓	✓
B42	Double Door Standard Base Cabinet - 42" W	✓	✓	✓	✓	✓	✓	✓	✓	✓	✓	✓	✓	✓	✓

*All Shaker Designer White drawers are available with either a slab drawer front or 5-Piece drawer front. All 5-Piece SKUs are notated with '5PC' on the Order Form

*All Value Series drawers can be upgraded. Upgrade includes: Drawer Box: 5/8" Solid Wood, Dovetailed; Drawer Slides: Under Mount, Full Extension, Metal, Soft Close with Ball Bearings. All Drawer Upgrade SKUs are notated with 'DU' on the Order Form

Item Code	Item Description	Shaker Designer White	Shaker Espresso	Brooklyn Bright White	Brooklyn Modern Gray	Brooklyn Slate	Lenox Mocha	Lenox Canvas	Lenox Country Linen	Alex Brandwine	Taylor White	Taylor Espresso	Taylor Creme	Taylor Mocha
Premier										Select	Value			
Base Cabinets														
DB12-3	Drawer Base Cabinet - 12" W	✓	✓	✓	✓	✓	✓	✓	✓	✓	✓	✓	✓	✓
DB15-3	Drawer Base Cabinet - 15" W	✓	✓	✓	✓	✓	✓	✓	✓	✓	✓	✓	✓	✓
DB18-3	Drawer Base Cabinet - 18" W	✓	✓	✓	✓	✓	✓	✓	✓	✓	✓	✓	✓	✓
DB21-3	Drawer Base Cabinet - 21" W	✓	✓	✓	✓	✓	✓	✓	✓	✓	✓	✓	✓	✓
DB24-3	Drawer Base Cabinet - 24" W	✓	✓	✓	✓	✓	✓	✓	✓	✓	✓	✓	✓	✓
DB30-3	Drawer Base Cabinet - 30" W	✓	✓	✓	✓	✓	✓	✓	✓	✓	✓	✓	✓	✓
DB36-3	Drawer Base Cabinet - 36" W	✓	✓	✓	✓	✓	✓	✓	✓	✓	✓	✓	✓	✓
CC30	Cooking Center Base Cabinet	✓	✓	✓	✓	✓	✓	✓	✓	✓	✓	✓	✓	✓
FSB36	Farm Sink Base Cabinet	✓	✓	✓	✓	✓	✓	✓	✓	✓	✓	✓	✓	✓
TRB18FH-1	Trash Can Base w/ Full Ht Door -18" W	✓	✓	✓	✓	✓	✓	✓	✓	✓	✓	✓	✓	✓
TRB18FH-2	Trash Can Base w/ Full Ht Door -18" W	✓	✓	✓	✓	✓	✓	✓	✓	✓	✓	✓	✓	✓
SB30	Sink Base Cabinet - 30" W x 34.5" H	✓	✓	✓	✓	✓	✓	✓	✓	✓	✓	✓	✓	✓
SB33	Sink Base Cabinet - 33" W x 34.5" H	✓	✓	✓	✓	✓	✓	✓	✓	✓	✓	✓	✓	✓
SB36	Sink Base Cabinet - 36" W x 34.5" H	✓	✓	✓	✓	✓	✓	✓	✓	✓	✓	✓	✓	✓
SB42	Sink Base Cabinet w/ CS - 42" W x 34.5" H	✓	✓	✓	✓	✓	✓	✓	✓	✓	✓	✓	✓	✓
SB48	Sink Base Cabinet w/ CS - 48" W x 34.5" H	✓	✓	✓	✓	✓	✓	✓	✓	✓	✓	✓	✓	✓
CSF42	Corner Sink Front for 42" Space - 27" W	✓	✓	✓	✓	✓	✓	✓	✓	✓	✓	✓	✓	✓
CSF-FLOOR	Natural Corner Sink Front Floor 48" x 48"	✓	✓	✓	✓	✓	✓	✓	✓	✓	✓	✓	✓	✓
BB36	Blind Base Cabinet for 36" to 39" Space - 30" W	✓	✓	✓	✓	✓	✓	✓	✓	✓	✓	✓	✓	✓
BB42	Blind Base Cabinet for 42" to 45" Space - 36" W	✓	✓	✓	✓	✓	✓	✓	✓	✓	✓	✓	✓	✓
BB48	Blind Base Cab for 48" to 51" Space - 48" W	✓	✓	✓	✓	✓	✓	✓	✓	✓	✓	✓	✓	✓
ER33	Easy Reach Base Cabinet - 33" W x 33" D	✓	✓	✓	✓	✓	✓	✓	✓	✓	✓	✓	✓	✓
ER36	Easy Reach Base Cabinet - 36" W x 36" D	✓	✓	✓	✓	✓	✓	✓	✓	✓	✓	✓	✓	✓
TAB12FHD-L	Angle Base with Hinges on Left	✓	✓	✓	✓	✓	✓	✓	✓	✓	✓	✓	✓	✓
TAB12FHD-R	Angle Base with Hinges on Right	✓	✓	✓	✓	✓	✓	✓	✓	✓	✓	✓	✓	✓
DDB18	Desk Drawer Base - 18" W x 29.5" H x 24" D	✓	✓	✓	✓	✓	✓	✓	✓	✓	✓	✓	✓	✓
Tall Cabinets														
P1884	Pantry - 18" W x 84" H	✓	✓	✓	✓	✓	✓	✓	✓	✓	✓	✓	✓	✓
P1890	Pantry - 18" W x 90" H	✓	✓	✓	✓	✓	✓	✓	✓	✓	✓	✓	✓	✓
P1896	Pantry - 18" W x 96" H	✓	✓	✓	✓	✓	✓	✓	✓	✓	✓	✓	✓	✓
P2484	Pantry - 24" W x 84" H	✓	✓	✓	✓	✓	✓	✓	✓	✓	✓	✓	✓	✓
P2490	Pantry - 24" W x 90" H	✓	✓	✓	✓	✓	✓	✓	✓	✓	✓	✓	✓	✓
P2496	Pantry - 24" W x 96" H	✓	✓	✓	✓	✓	✓	✓	✓	✓	✓	✓	✓	✓
P3084	Pantry - 30" W x 84" H	✓	✓	✓	✓	✓	✓	✓	✓	✓	✓	✓	✓	✓
P3090	Pantry - 30" W x 90" H	✓	✓	✓	✓	✓	✓	✓	✓	✓	✓	✓	✓	✓
P3096	Pantry - 30" W x 96" H	✓	✓	✓	✓	✓	✓	✓	✓	✓	✓	✓	✓	✓
OC3384	Oven Cabinet - 33" W x 84" H	✓	✓	✓	✓	✓	✓	✓	✓	✓	✓	✓	✓	✓
OC3390	Oven Cabinet - 33" W x 90" H	✓	✓	✓	✓	✓	✓	✓	✓	✓	✓	✓	✓	✓
OC3396	Oven Cabinet - 33" W x 96" H	✓	✓	✓	✓	✓	✓	✓	✓	✓	✓	✓	✓	✓
OP3333	Oven Cabinet Overlay Panel - 33" W x 33" H	✓	✓	✓	✓	✓	✓	✓	✓	✓	✓	✓	✓	✓
OP3348	Oven Cabinet Overlay Panel - 33" W x 48" H	✓	✓	✓	✓	✓	✓	✓	✓	✓	✓	✓	✓	✓
OP3353	Oven Cabinet Overlay Panel - 33" W x 53" H	✓	✓	✓	✓	✓	✓	✓	✓	✓	✓	✓	✓	✓
OP3362	Oven Cabinet Overlay Panel - 33" W x 62" H	✓	✓	✓	✓	✓	✓	✓	✓	✓	✓	✓	✓	✓
OCD337	Oven Cabinet Drawer	✓	✓	✓	✓	✓	✓	✓	✓	✓	✓	✓	✓	✓
Vanities														
V24-1	Single Door Vanity - 24" W x 34.5" H x 21" D	-	-	-	-	-	-	-	-	✓	-	-	-	-
V24-2	Double Door Vanity - 24" W x 34.5" H x 21" D	✓	✓	✓	✓	✓	✓	✓	✓	✓	✓	✓	✓	✓
V27	Double Door Vanity - 27" W x 34.5" H x 21" D	✓	✓	✓	✓	✓	✓	✓	✓	✓	✓	✓	✓	✓
V30	Double Door Vanity - 30" W x 34.5" H x 21" D	✓	✓	✓	✓	✓	✓	✓	✓	✓	✓	✓	✓	✓
V33	Double Door Vanity - 33" W x 34.5" H x 21" D	✓	✓	✓	✓	✓	✓	✓	✓	✓	✓	✓	✓	✓
V36	Double Door Vanity - 36" W x 34.5" H x 21" D	✓	✓	✓	✓	✓	✓	✓	✓	✓	✓	✓	✓	✓
V42	Double Door Vanity - 42" W x 34.5" H x 21" D	-	-	-	-	-	-	-	-	✓	-	-	-	-

Item Code	Item Description	Shaker Designer White	Shaker Espresso	Brooklyn Bright White	Brooklyn Modern Gray	Brooklyn Slate	Lenox Modra	Lenox Canvas	Lenox Country	Alex Brandwine	Taylor White	Taylor Espresso	Taylor Creme	Taylor Mocha
Premier										Select	Value			
Vanities														
VB12	Single Door Base Vanity - 12" W x 21" D	✓	✓	✓	✓	✓	✓	✓	✓	-	-	-	-	-
VB15	Single Door Base Vanity - 15" W x 21" D	✓	✓	✓	✓	✓	✓	✓	✓	-	✓	✓	✓	✓
VB18	Single Door Base Vanity - 18" W x 21" D	✓	✓	✓	✓	✓	✓	✓	✓	-	✓	✓	✓	✓
VDB12	Vanity Drawer Base - 12" W x 34.5" H x 21" D	✓	✓	✓	✓	✓	✓	✓	✓	✓	✓	✓	✓	✓
VDB15	Vanity Drawer Base - 15" W x 34.5" H x 21" D	✓	✓	✓	✓	✓	✓	✓	✓	✓	✓	✓	✓	✓
VDB18	Vanity Drawer Base - 18" W x 34.5" H x 21" D	✓	✓	✓	✓	-	✓	✓	✓	-	✓	✓	✓	✓
VDB21	Vanity Drawer Base - 21" W x 34.5" H	-	-	-	-	-	-	-	-	-	✓	✓	✓	✓
VDB24	Vanity Drawer Base - 24" W x 34.5" H	✓	✓	✓	✓	✓	✓	✓	✓	-	✓	✓	✓	✓
VS36	Vanity Sink Base - 36" W x 34.5" H x 21" D	✓	✓	✓	✓	✓	✓	✓	✓	✓	✓	✓	✓	✓
VS42	Vanity Sink Base - 42" W x 34.5" H x 21" D	✓	✓	✓	✓	✓	✓	✓	✓	✓	✓	✓	✓	✓
VS48	Vanity Sink Base - 48" W x 34.5" H x 21" D	✓	✓	✓	✓	✓	✓	✓	✓	✓	✓	✓	✓	✓
VSBD36	Vanity Sink Base Left Drawer Stack - 36" W x 34.5" H x 21" D	✓	✓	✓	✓	✓	✓	✓	✓	-	-	-	-	-
VSBDL36	Vanity Sink Base Right Drawer Stack - 36" W x 34.5" H x 21" D	✓	✓	✓	✓	✓	✓	✓	✓	-	-	-	-	-
DVSB54	Double Vanity SB - 54"W x 34.5" H x 21"D	-	-	-	-	-	-	-	-	-	✓	✓	✓	✓
DVSB60	Double Vanity SB - 60"W x 34.5" H x 21"D	-	-	-	-	-	-	-	-	-	✓	✓	✓	✓
EVSB54	Extended Vanity SB - 54" W x 34.5" H x 21" D	-	-	-	-	-	-	-	-	-	✓	✓	✓	✓
EVSB60	Extended Vanity SB - 60" W x 34.5" H x 21" D	-	-	-	-	-	-	-	-	-	✓	✓	✓	✓
KD24	Vanity Drawer - 24" W	✓	✓	✓	✓	✓	✓	✓	✓	✓	-	-	-	-
KD36	Vanity Drawer - 36" W with Adjustable Sides	✓	✓	✓	✓	✓	✓	✓	✓	-	✓	✓	✓	✓
Moldings and Trim														
TKS8	Toe Kick	✓	✓	✓	✓	✓	✓	✓	✓	✓	✓	✓	✓	✓
SCRIBE	Scribe	✓	✓	✓	✓	✓	✓	✓	✓	✓	✓	✓	✓	✓
SHOE	Shoe Molding	✓	✓	✓	✓	✓	✓	✓	✓	✓	✓	✓	✓	✓
FBM8	Furniture Base Molding	✓	✓	✓	✓	✓	✓	✓	✓	-	✓	✓	✓	✓
CM8	Traditional Crown Molding	-	-	✓	✓	✓	✓	✓	✓	✓	✓	✓	✓	✓
BCM8	Large Crown Molding	-	-	✓	✓	✓	✓	✓	✓	✓	✓	✓	✓	✓
RCM8	Royal Crown Molding	✓	✓	✓	✓	✓	✓	✓	✓	-	-	-	-	-
SCM8	Shaker Crown Molding	✓	✓	✓	✓	✓	✓	✓	✓	-	-	-	-	-
COM8	Cove Crown Molding	✓	✓	✓	✓	✓	✓	✓	✓	-	-	-	-	-
BAM8	Batten Molding	✓	✓	✓	✓	✓	✓	✓	✓	-	✓	✓	✓	✓
OCM8	Outside Corner Molding	✓	✓	✓	✓	✓	✓	✓	✓	✓	✓	✓	✓	✓
LRM8	Traditional Light Rail	✓	✓	✓	✓	✓	✓	✓	✓	-	✓	✓	✓	✓
BEM8	Bottom Edge Molding (Narrow Light Rail)	✓	✓	✓	✓	✓	✓	✓	✓	-	-	-	-	-
Fillers and Panels														
BPLG4896	Back Panel (Long Grain) - 48" W x 96" H	✓	✓	✓	✓	✓	✓	✓	✓	✓	✓	✓	✓	✓
BPSG9648	Back Panel (Short Grain) - 96" W x 48" H	-	✓	-	-	✓	✓	-	-	✓	-	✓	-	✓
BBP4842	Bead Board - 48" W x 42" H x 0.25" D	✓	✓	✓	✓	✓	✓	✓	✓	-	✓	✓	✓	✓
PSP4896	1/2" Thick Finished Plywood Filler	✓	✓	✓	✓	✓	✓	✓	✓	-	-	-	-	-
DWR3	Dish Washer End Panel	✓	✓	✓	✓	✓	✓	✓	✓	-	✓	✓	✓	✓
TEP3096	Tall End Panel	✓	✓	✓	✓	✓	✓	✓	✓	-	✓	✓	✓	✓
BCE1596	Book Case End - 1.5" W x 96" H x 15" D	✓	✓	✓	✓	✓	✓	✓	✓	-	-	-	-	-
F396	Filler - 3" W x 96" H	✓	✓	✓	✓	✓	✓	✓	✓	✓	✓	✓	✓	✓
F696	Filler - 6" W x 96" H	✓	✓	✓	✓	✓	✓	✓	✓	✓	✓	✓	✓	✓
OLF330	Overlay Filler - 3" W x 30" H	✓	✓	✓	✓	✓	✓	✓	✓	-	-	-	-	-
OLF336	Overlay Filler - 3" W x 36" H	✓	✓	✓	✓	✓	✓	✓	✓	-	-	-	-	-
OLF342	Overlay Filler - 3" W x 42" H	✓	✓	✓	✓	✓	✓	✓	✓	-	-	-	-	-
OLF384	Overlay Filler - 3" W x 84" H	-	-	✓	✓	✓	✓	✓	✓	-	-	-	-	-

*All Shaker Designer White drawers are available with either a slab drawer front or 5-Piece drawer front. All 5-Piece SKUs are notated with '5PC' on the Order Form

*All Value Series drawers can be upgraded. Upgrade includes: Drawer Box: 5/8" Solid Wood, Dovetailed; Drawer Slides: Under Mount, Full Extension, Metal, Soft Close with Ball Bearings. All Drawer Upgrade SKUs are notated with 'DU' on the Order Form

